

TOWN OF WINTER PARK, CO

FEBRUARY 2019



SALES, LODGING, ACCOMMODATION AND TRANSIT/TRAILS TAX REPORT

The Town of Winter Park Sales, Lodging, Accommodation, and Trails/Transit Tax Report examines tax collections for the month of February 2019, which were remitted to the Town in March 2019, and includes an analysis for the year-to-date results along with prior year results.

Notes & Changes for Comparisons

A Transit & Trails Sales and Lodging tax became effective on December 1, 2015 which increased the Town's sales tax rate from 5% to 7%. This new tax is reported separately on the "Summary Results" page but will not be separately reported in the "Tax Comparison" section that follows. However, to remain consistent in comparisons to 2015 and prior years, the "Percentage" column for each year will be calculated based on a 5% sales tax rate.

SUMMARY RESULTS FOR SALES, LODGING, ACCOMMODATION AND TRANSIT/TRAILS TAX

February 2019 sales tax collections increased 2% over February 2018. The Retail and Restaurant & Bar sectors showed increased collections over February 2018 of 7% and 11% respectively. Our Lodging sector collections decreased 8% over February 2018, following the strong increase of 17% we reported in January. We will be comparing our results to data released by our Lodging businesses when available. Year over year our sales tax collections reflect an increase of 5% attributable to growth in both our Downtown and Old Town/Ski Area geographic areas. Our Retail sector continues to show the strongest growth (10%) year over year with strong growth across our Downtown, Old Town/Ski Area and Outside County geographic areas. Restaurant & Bar and Lodging sector collections have increased 4% and 3% respectively over 2018.

Current Month

7% Tax	February 2019	February 2018	19 - 18 %	February 2017	19 - 17 %	February 2016	19 - 16 %	February 2015	19 - 15 %	February 2014	19 - 14 %	February 2013	19 - 13 %
Sales Tax - Not Lodging (5%)	608,697	571,379	7%	528,294	15%	464,638	31%	449,775	35%	416,404	46%	405,057	50%
Lodging/Accomm Tax (5%)	210,054	227,957	-8%	225,374	-7%	171,430	23%	180,392	16%	162,699	29%	148,115	42%
Monthly Total (5%)	818,751	799,336	2%	753,668	9%	636,068	29%	630,167	30%	579,103	41%	553,172	48%
Transit & Trails Tax (2%)	327,501	319,734	2%	301,467	9%	254,427	29%	-	-	-	-	-	-
Total Collected for Month	1,146,252	1,119,070	2%	1,055,135	9%	890,495	29%	630,167	-	579,103	-	553,172	-

Year-To-Date

7% Tax	YTD 2019	YTD 2018	19 - 18 %	YTD 2017	19 - 17 %	YTD 2016	19 - 16 %	YTD 2015	19 - 15 %	YTD 2014	19 - 14 %	YTD 2013	19 - 13 %
Sales Tax - Not Lodging (5%)	1,223,835	1,156,239	6%	1,052,513	16%	961,316	27%	909,680	35%	829,965	47%	799,024	53%
Lodging/Accomm Tax (5%)	433,917	419,820	3%	400,099	8%	310,629	40%	351,671	23%	322,779	34%	306,734	41%
YTD Total (5%)	1,657,752	1,576,059	5%	1,452,612	14%	1,271,945	30%	1,261,351	31%	1,152,744	44%	1,105,758	50%
Transit & Trails Tax (2%)	663,102	630,424	5%	581,045	14%	508,778	30%	-	-	-	-	-	-
Total Collected for Year	2,320,854	2,206,483	5%	2,033,657	14%	1,780,723	30%	1,261,351	-	1,152,744	-	1,105,758	-

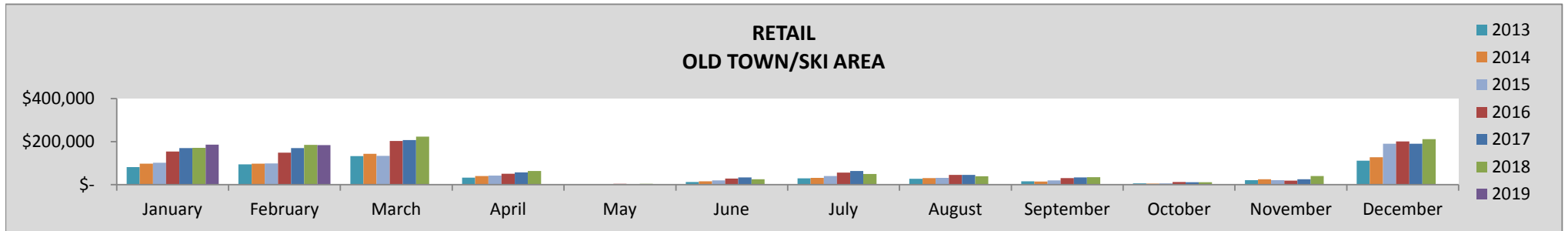
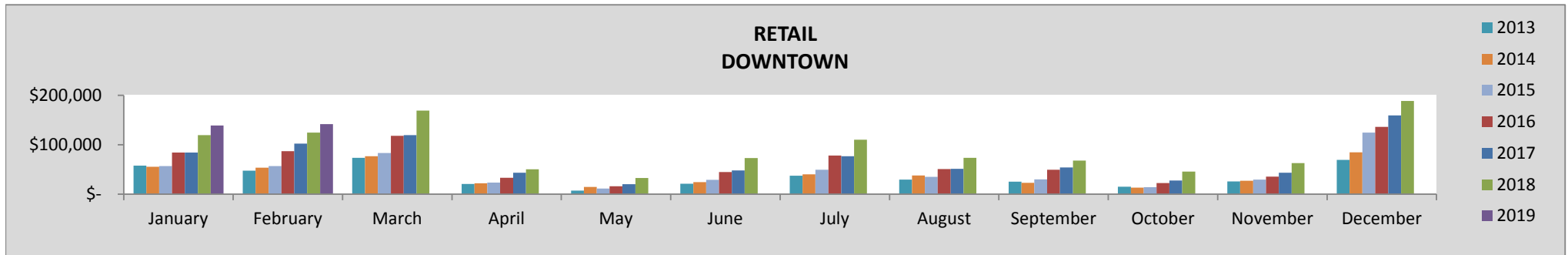
TAX COMPARISON BY INDUSTRY CLASS AND LOCATION

The following compares sales, lodging and accommodations tax collections for the current month and year by sector and location of the business.

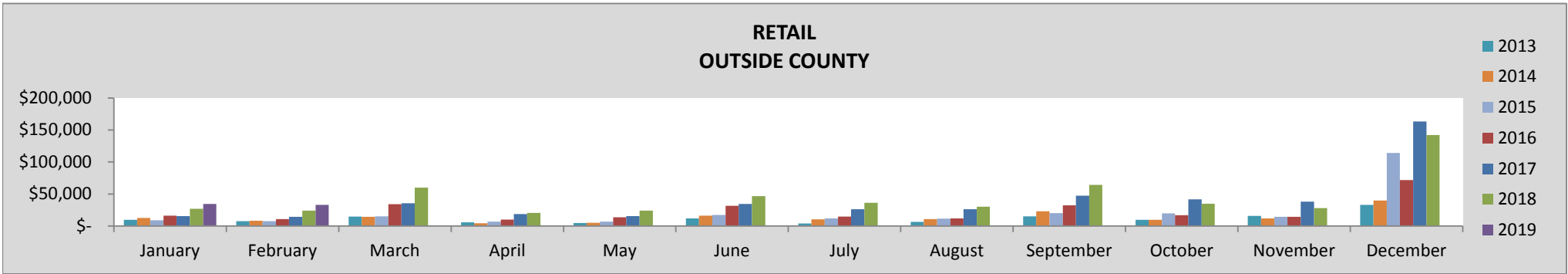
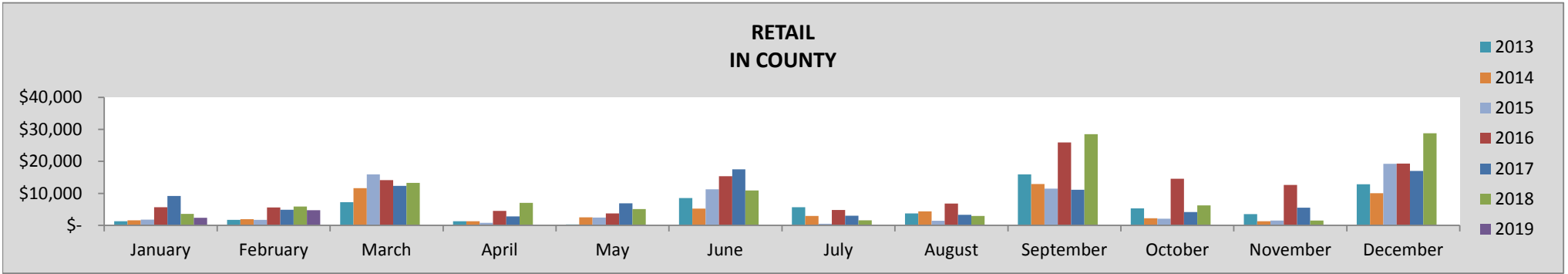
RETAIL

FEBRUARY	2019	2018	19-18 %	2017	19-17 %	2016	19-16 %	2015	19-15 %	2014	19-14 %	2013	19-13%
TOTAL	363,015	339,138	7%	290,957	25%	251,870	44%	164,456	58%	161,359	61%	150,901	72%
Downtown	141,796	124,392	14%	102,363	39%	86,843	63%	57,020	78%	53,590	89%	47,753	112%
Old Town/Ski Area	183,309	184,829	-1%	169,411	8%	148,480	23%	98,271	33%	97,698	34%	93,774	40%
In County	4,752	5,843	-19%	4,845	-2%	5,613	-15%	1,707	99%	1,903	78%	1,731	96%
Outside County	33,157	24,074	38%	14,339	131%	10,935	203%	7,459	218%	8,168	190%	7,643	210%

YEAR-TO-DATE	2019	2018	19-18 %	2017	19-17 %	2016	19-16 %	2015	19-15 %	2014	19-14 %	2013	19-13%
TOTAL	725,024	660,303	10%	569,755	27%	511,643	42%	333,863	55%	328,682	58%	300,608	72%
Downtown	280,648	243,610	15%	186,586	50%	171,115	64%	113,777	76%	109,247	83%	105,338	90%
Old Town/Ski Area	369,543	356,085	4%	339,221	9%	302,201	22%	200,293	32%	195,153	35%	174,897	51%
In County	7,096	9,430	-25%	14,051	-50%	11,304	-37%	3,477	46%	3,448	47%	2,981	70%
Outside County	67,737	51,179	32%	29,896	127%	27,022	151%	16,317	197%	20,834	132%	17,392	178%



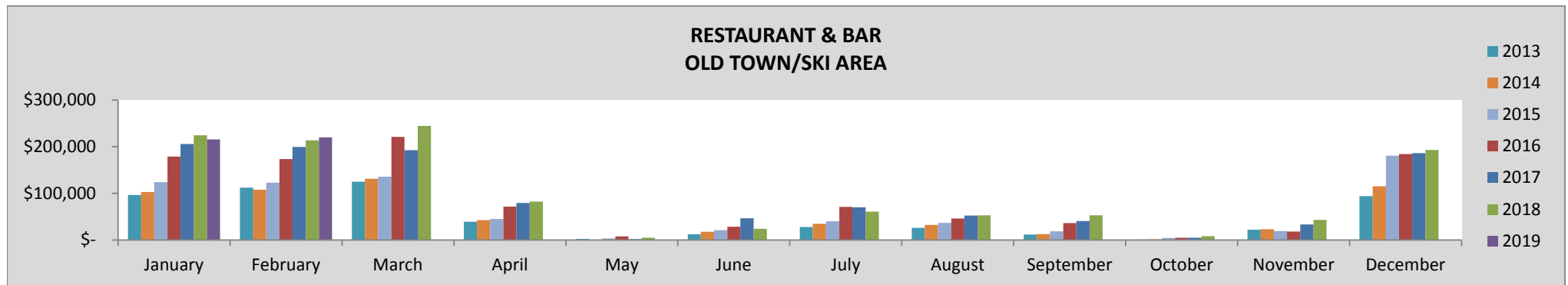
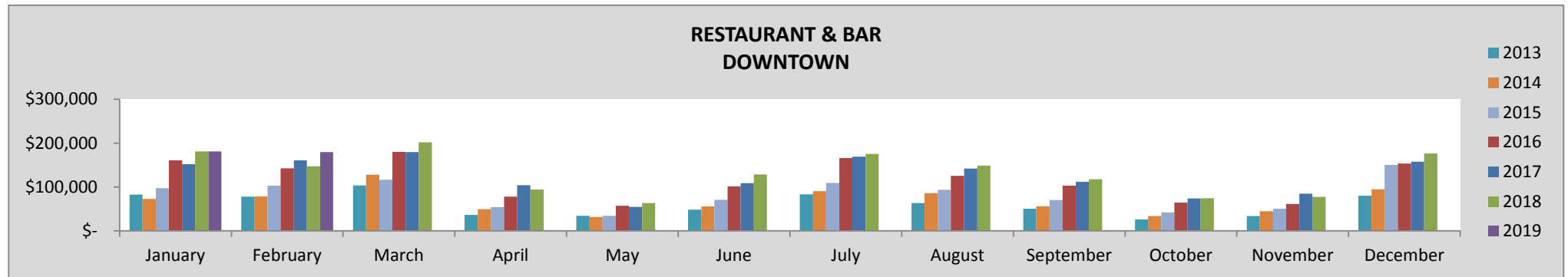
RETAIL - CONTINUED



RESTAURANT & BAR

FEBRUARY	2019	2018	19-18 %	2017	19-17 %	2016	19-16 %	2015	19-15 %	2014	19-14 %	2013	19-13%
TOTAL	399,384	360,982	11%	359,906	11%	315,853	26%	225,858	26%	193,775	47%	190,206	50%
Downtown	179,586	147,324	22%	160,601	12%	142,412	26%	102,764	25%	85,710	50%	77,731	65%
Old Town/Ski Area	219,798	213,658	3%	199,305	10%	173,442	27%	123,094	28%	108,066	45%	112,475	40%

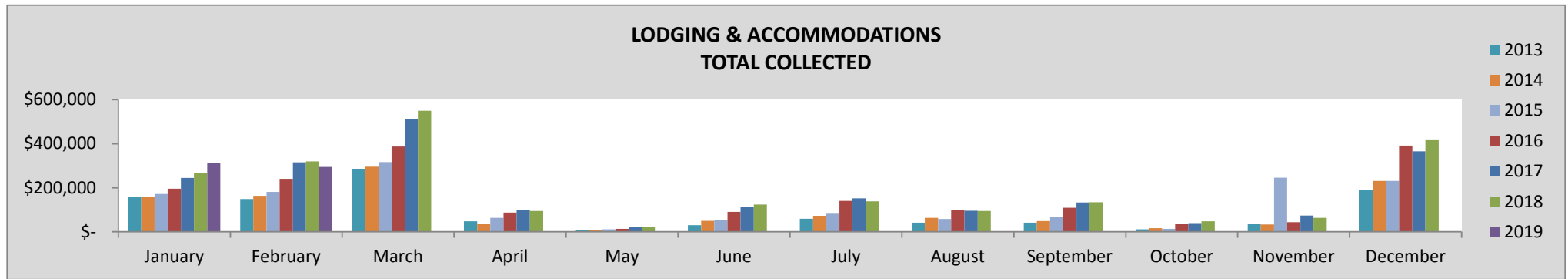
YEAR-TO-DATE	2019	2018	19-18 %	2017	19-17 %	2016	19-16 %	2015	19-15 %	2014	19-14 %	2013	19-13%
TOTAL	795,663	766,915	4%	718,046	11%	655,662	21%	447,287	27%	369,383	54%	369,589	54%
Downtown	360,448	328,573	10%	312,731	15%	303,192	19%	200,152	29%	158,418	63%	160,402	61%
Old Town/Ski Area	435,215	438,343	-1%	405,315	7%	352,470	23%	247,135	26%	210,966	47%	209,187	49%



LODGING & ACCOMMODATION

FEBRUARY	2019	2018	19-18 %	2017	19-17 %	2016	19-16 %	2015	19-15 %	2014	19-14 %	2013	19-13%
TOTAL	294,076	319,140	-8%	315,524	-7%	240,002	23%	180,392	16%	162,699	29%	148,115	42%

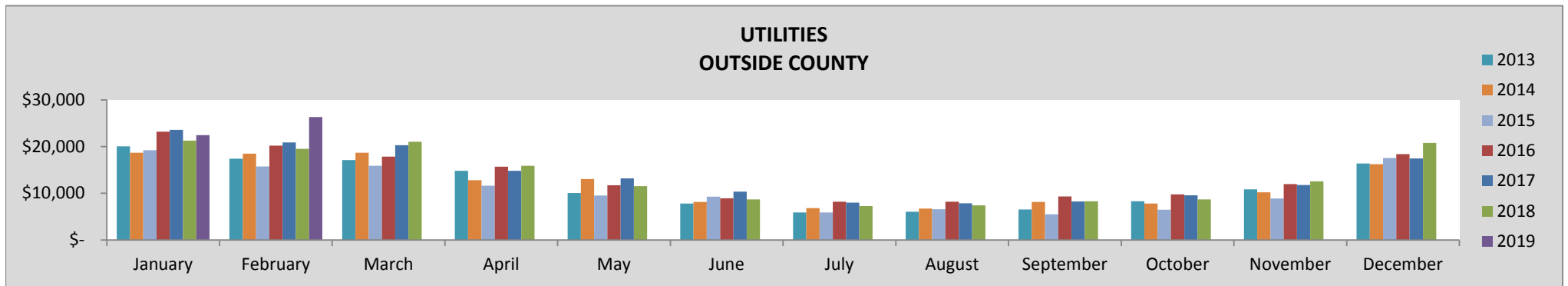
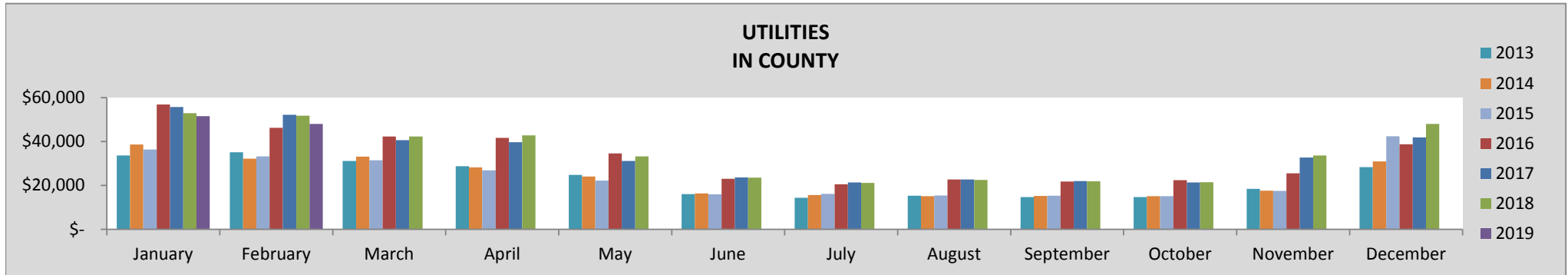
YEAR-TO-DATE	2019	2018	19-18 %	2017	19-17 %	2016	19-16 %	2015	19-15 %	2014	19-14 %	2013	19-13%
TOTAL	607,484	587,748	3%	560,139	8%	434,881	40%	351,671	23%	322,779	34%	306,734	41%



UTILITIES

FEBRUARY	2019	2018	19-18 %	2017	19-17 %	2016	19-16 %	2015	19-15 %	2014	19-14 %	2013	19-13%
TOTAL	74,399	71,257	4%	73,091	2%	66,430	12%	49,015	8%	50,630	5%	52,544	1%
In County	48,059	51,737	-7%	52,193	-8%	46,235	4%	33,246	3%	32,151	7%	35,136	-2%
Outside County	26,339	19,519	35%	20,899	26%	20,195	30%	15,769	19%	18,479	2%	17,408	8%

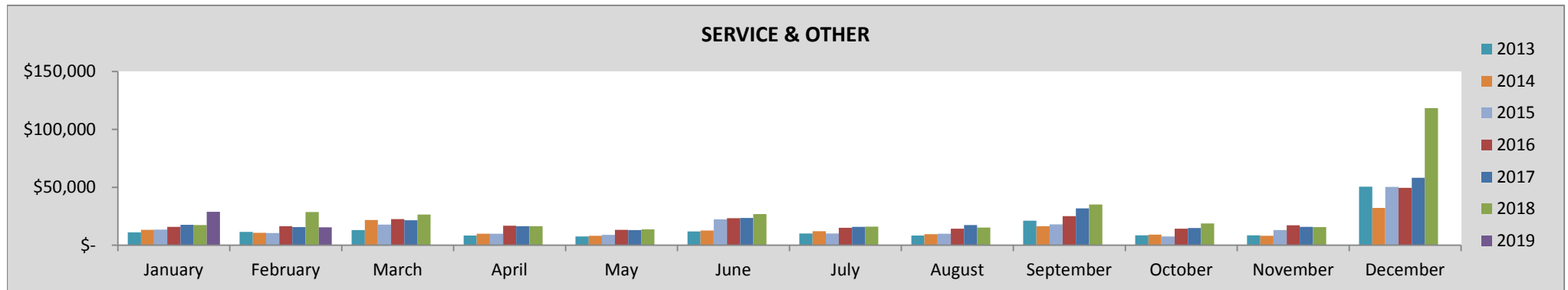
YEAR-TO-DATE	2019	2018	19-18 %	2017	19-17 %	2016	19-16 %	2015	19-15 %	2014	19-14 %	2013	19-13%
TOTAL	148,486	145,488	2%	152,393	-3%	146,478	1%	104,591	1%	107,962	-2%	106,308	0%
In County	99,667	104,696	-5%	107,885	-8%	103,071	-3%	69,575	2%	70,778	1%	68,837	3%
Outside County	48,819	40,793	20%	44,509	10%	43,407	12%	35,016	0%	37,184	-6%	37,471	-7%



SERVICE & OTHER

FEBRUARY	2019	2018	19-18 %	2017	19-17 %	2016	19-16 %	2015	19-15 %	2014	19-14 %	2013	19-13%
TOTAL	15,379	28,554	-46%	15,657	-2%	16,340	-6%	10,446	5%	10,640	3%	11,406	-4%
Downtown	7	-	-	-	-	-	-	-	-	-	-	-	-
Old Town/Ski Area	2,672	2,672	0%	2,672	0%	4,198	-36%	1,908	0%	1,908	0%	2,113	-10%
In County	177	2,736	-94%	308	-43%	346	-49%	152	-17%	218	-42%	1,204	-90%
Outside County	12,523	23,146	-46%	12,678	-1%	11,796	6%	8,386	7%	8,514	5%	8,089	11%

YEAR-TO-DATE	2019	2018	19-18 %	2017	19-17 %	2016	19-16 %	2015	19-15 %	2014	19-14 %	2013	19-13%
TOTAL	44,197	46,028	-4%	33,325	33%	32,060	38%	23,939	32%	23,938	32%	22,520	40%
Downtown	39	-	-	832	-95%	338	-88%	-	-	7	299%	-	-
Old Town/Ski Area	5,343	5,999	-11%	5,344	0%	6,143	-13%	3,817	0%	3,817	0%	4,301	-11%
In County	512	3,100	-83%	900	-43%	989	-48%	838	-56%	1,237	-70%	1,593	-77%
Outside County	38,302	36,930	4%	26,250	46%	24,589	56%	19,285	42%	18,877	45%	16,625	65%



SALES TAX COMPARISON BY LOCATION

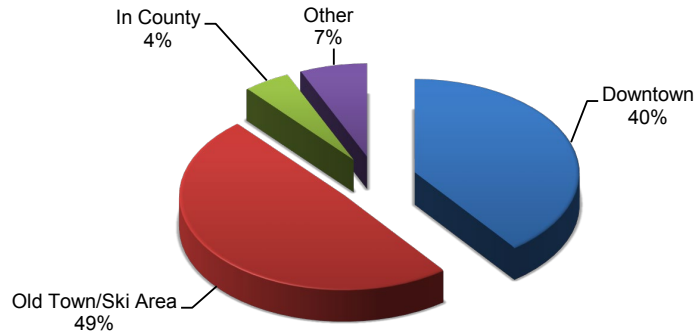
The following compares sales tax collections for the current month and year by location of the business. For lodging properties managed by a property management company, the lodging and accommodation taxes are reflected in the geographic area of the property management company offices.

GEOGRAPHIC AREA

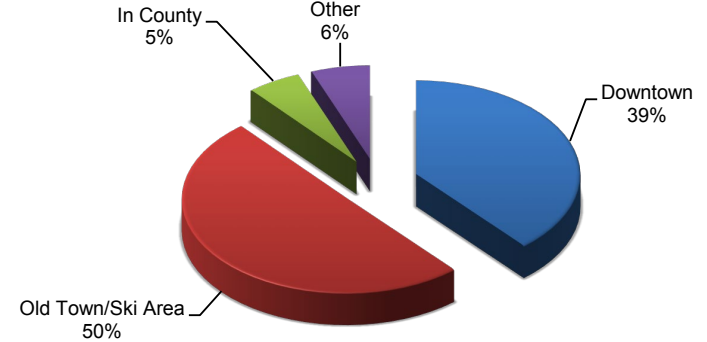
FEBRUARY	2019	2018	19-18 %	2017	19-17 %	2016	19-16 %	2015	19-15 %	2014	19-14 %	2013	19-13%
Downtown	452,373	422,786	7%	415,698	9%	325,329	39%	242,040	34%	207,754	56%	189,797	70%
Old Town/Ski Area	568,870	569,228	0%	534,177	6%	470,047	21%	321,410	26%	301,917	35%	292,164	39%
In County	52,989	60,316	-12%	57,345	-8%	52,194	2%	35,104	8%	34,272	10%	38,071	-1%
Outside County	72,019	66,740	8%	47,915	50%	42,925	68%	31,614	63%	35,161	46%	33,140	55%

YEAR-TO-DATE	2019	2018	19-18 %	2017	19-17 %	2016	19-16 %	2015	19-15 %	2014	19-14 %	2013	19-13%
Downtown	920,312	852,387	8%	748,162	23%	649,143	42%	474,387	39%	408,846	61%	405,198	62%
Old Town/Ski Area	1,138,409	1,107,970	3%	1,062,005	7%	921,197	24%	642,456	27%	591,541	37%	555,662	46%
In County	107,274	117,225	-8%	122,836	-13%	115,364	-7%	73,890	4%	75,463	2%	73,411	4%
Outside County	154,858	128,901	20%	100,654	54%	95,019	63%	70,617	57%	76,895	44%	71,488	55%

2019 YTD TAX COLLECTION BY GEOGRAPHIC AREA

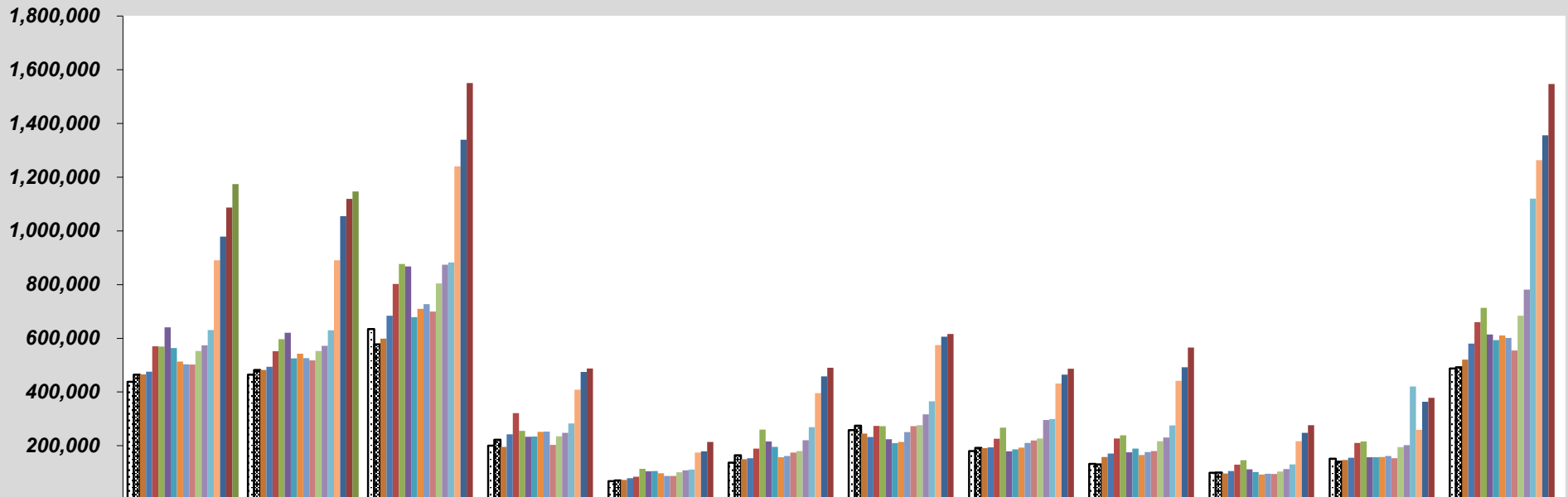


2018 YTD TAX COLLECTION BY GEOGRAPHIC AREA



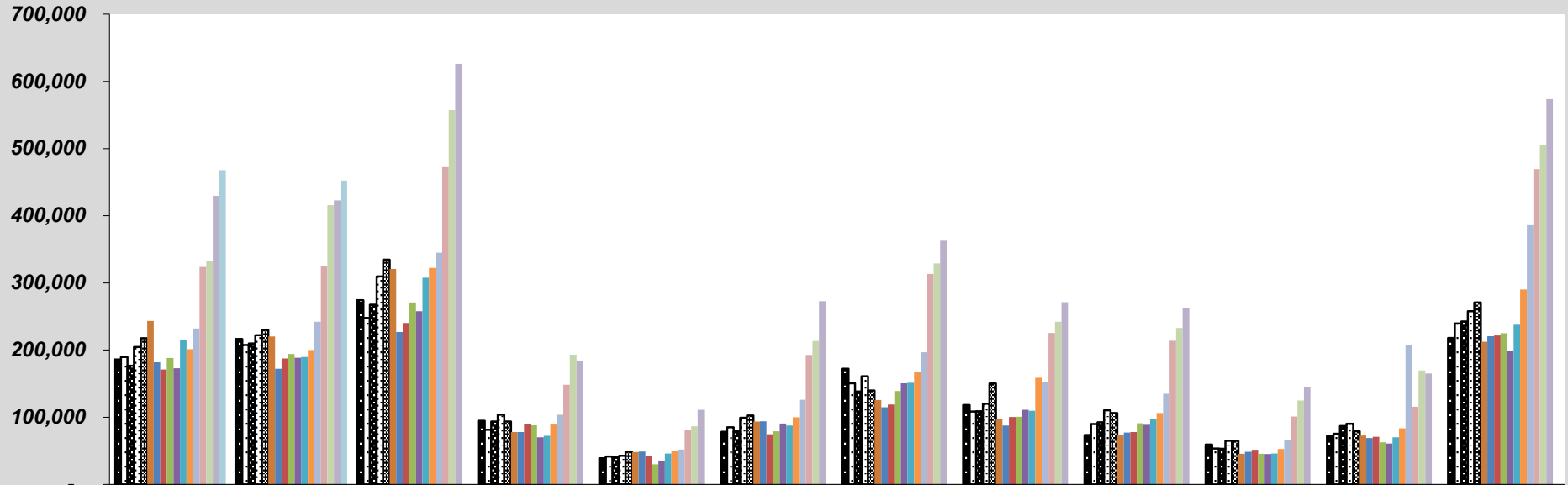
SALES, LODGING AND ACCOMMODATIONS HISTORICAL COMPARISONS

SALES, LODGING & TRANSIT/TRAILS TAX COLLECTION BY MONTH TOTAL COLLECTED



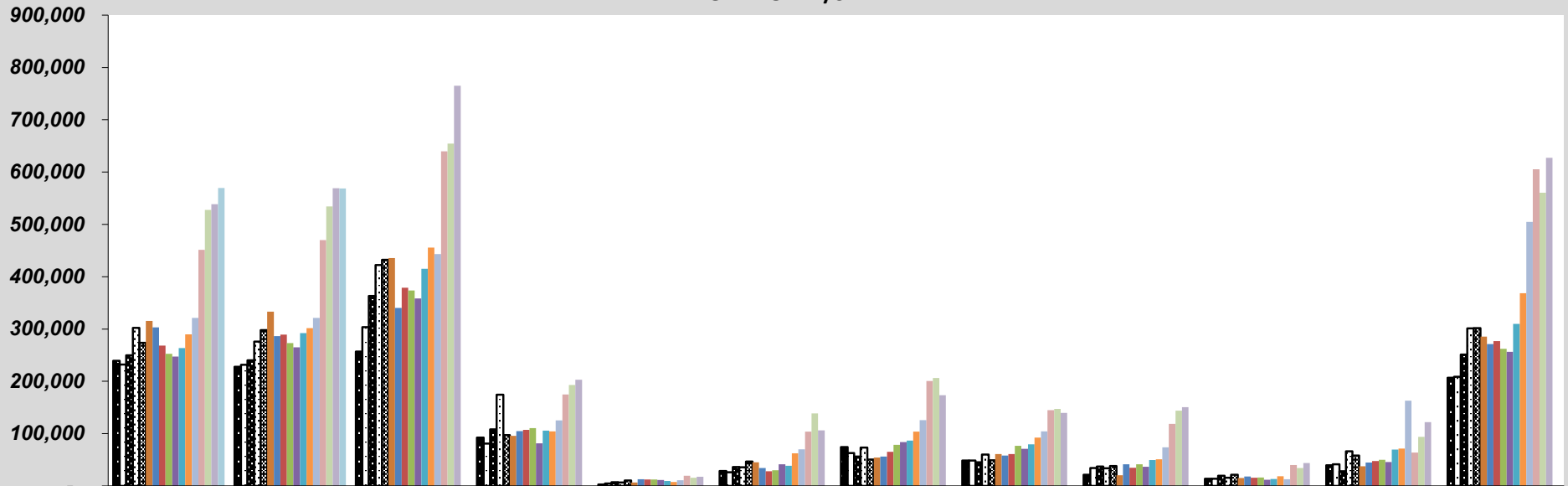
	January	February	March	April	May	June	July	August	September	October	November	December
2002	437,866	464,721	634,021	200,114	67,944	136,732	258,112	179,879	132,364	99,136	151,316	487,690
2003	464,206	482,183	577,772	222,202	70,753	164,763	274,987	191,786	130,387	100,142	140,673	492,297
2004	465,636	482,218	599,007	195,530	73,016	149,574	245,261	190,902	157,771	96,273	147,306	520,560
2005	475,853	493,717	683,745	242,039	79,180	153,385	232,108	194,043	171,087	105,951	155,031	580,456
2006	570,565	551,930	802,785	321,874	84,686	189,148	273,277	225,736	227,240	129,595	210,441	659,792
2007	569,129	596,582	876,348	255,276	113,752	260,183	273,104	267,169	238,698	146,095	216,322	713,391
2008	641,147	621,092	868,007	233,065	104,450	216,318	224,060	179,559	175,072	111,701	157,267	614,364
2009	563,880	525,167	678,175	234,513	105,262	195,277	209,484	186,203	189,179	102,127	157,139	593,057
2010	512,902	542,805	709,436	251,866	97,725	157,098	214,305	192,812	165,332	92,548	157,639	610,366
2011	502,871	525,807	727,602	252,507	87,521	161,595	250,334	210,231	176,447	95,795	162,091	600,981
2012	502,299	517,956	700,085	203,100	87,169	174,678	272,955	219,843	180,454	94,880	153,135	554,761
2013	552,586	553,172	804,057	235,256	100,679	179,821	276,326	227,057	216,822	103,947	194,643	684,180
2014	573,641	571,643	873,650	248,271	108,475	220,579	316,845	295,888	230,432	113,455	202,296	781,781
2015	631,183	630,167	882,087	283,035	111,002	269,452	365,417	299,181	275,569	130,081	420,319	1,120,103
2016	890,228	890,496	1,240,267	408,748	174,479	395,600	575,107	431,393	441,625	216,422	258,633	1,263,430
2017	978,523	1,055,135	1,339,403	474,799	179,322	458,441	605,926	464,506	492,434	247,874	363,964	1,355,766
2018	1,087,413	1,119,070	1,550,843	487,278	213,708	490,517	615,896	486,607	565,689	276,510	378,422	1,546,874
2019	1,174,602	1,146,252										

SALES, LODGING & TRANSIT/TRAILS TAX COLLECTION DOWNTOWN



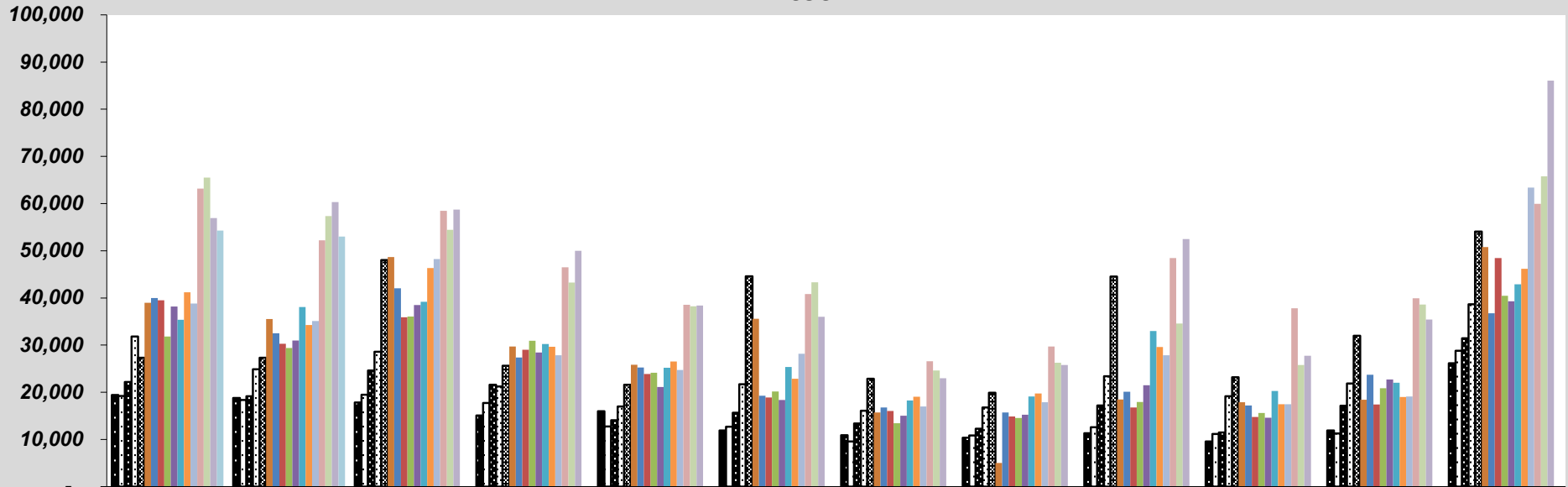
	January	February	March	April	May	June	July	August	September	October	November	December
■ 2003	186,050	216,502	274,068	94,855	38,853	78,285	172,064	118,390	73,387	59,362	71,992	217,888
□ 2004	189,887	207,596	247,987	81,394	41,700	85,062	150,598	108,521	89,811	53,559	75,232	239,742
▣ 2005	176,642	209,770	267,426	93,554	41,267	79,262	138,438	108,790	92,455	53,214	87,103	242,741
▤ 2006	204,761	221,968	309,736	103,529	42,822	99,396	161,219	119,911	110,464	64,862	90,392	257,854
▥ 2007	217,699	229,852	334,603	93,599	48,448	102,629	139,872	150,255	106,139	65,071	79,112	270,895
■ 2008	243,252	220,418	320,783	77,884	48,347	93,834	125,674	97,840	73,717	45,459	72,886	212,444
■ 2009	181,728	172,141	226,780	78,035	49,152	94,181	114,744	87,776	77,334	48,662	69,072	220,810
■ 2010	171,120	187,573	240,275	89,547	42,217	74,635	118,894	100,342	78,172	51,453	70,919	221,734
■ 2011	188,189	194,049	270,875	88,113	30,094	79,026	139,041	100,726	90,948	45,525	62,920	224,976
■ 2012	173,074	188,678	257,893	70,038	35,506	90,502	150,484	111,248	88,797	45,321	60,855	199,407
■ 2013	215,401	189,797	307,803	72,535	45,830	87,541	151,451	109,582	96,971	45,852	70,072	237,820
■ 2014	201,092	200,294	322,386	89,055	50,002	99,863	167,058	158,668	106,210	52,837	83,697	290,278
■ 2015	232,347	242,040	344,909	103,776	51,846	126,036	196,688	152,158	134,995	66,429	207,075	385,820
■ 2016	323,814	325,329	472,227	148,531	80,821	192,872	313,468	225,582	213,844	101,005	115,762	469,531
■ 2017	332,464	415,698	557,291	192,896	86,709	213,645	328,944	242,362	232,931	124,963	169,769	505,005
■ 2018	429,601	422,786	626,252	184,221	111,086	272,585	362,724	271,251	263,170	145,329	165,129	573,440
■ 2019	467,938	452,373										

**SALES, LODGING & TRANSIT/TRAILS TAX COLLECTION
OLD TOWN/SKI AREA**



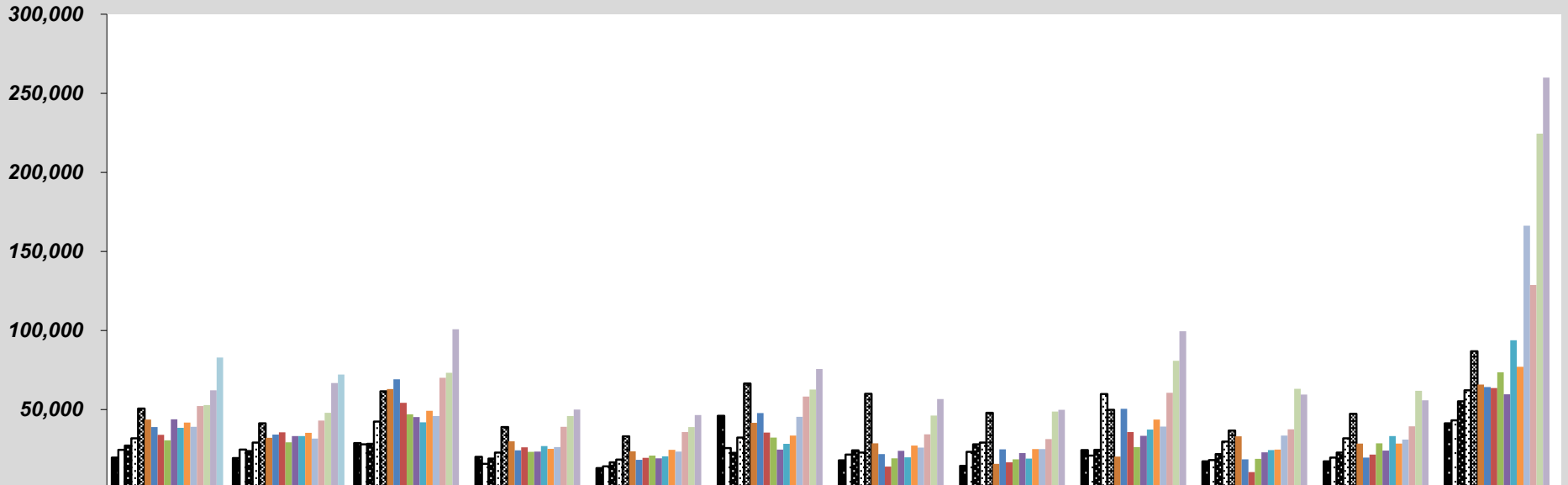
	January	February	March	April	May	June	July	August	September	October	November	December
■ 2003	239,159	227,710	257,069	92,273	2,985	28,593	74,198	48,645	21,358	13,966	39,555	207,026
□ 2004	231,985	231,628	303,503	80,802	4,662	26,255	62,663	48,560	34,494	13,614	41,203	208,826
■ 2005	249,817	240,337	363,428	108,041	7,285	35,955	56,095	45,100	36,936	19,501	28,064	251,150
□ 2006	302,207	276,069	422,156	174,404	6,586	35,812	73,267	59,996	33,638	15,911	66,392	301,244
■ 2007	273,567	298,106	432,215	97,126	10,623	46,527	50,493	49,150	38,265	21,253	57,948	301,586
■ 2008	315,331	333,046	435,583	95,582	6,754	45,416	54,078	61,109	20,631	15,399	37,523	285,321
■ 2009	303,241	286,369	340,254	104,929	12,762	34,105	56,234	57,955	41,304	17,884	44,810	271,322
■ 2010	268,400	289,347	379,096	107,307	12,249	28,260	65,474	60,978	34,732	15,892	47,826	276,704
■ 2011	252,370	273,178	373,778	110,331	12,499	30,164	78,773	76,461	41,354	15,951	49,806	261,944
■ 2012	247,243	265,180	358,431	81,254	11,503	41,207	83,663	70,982	36,857	12,082	45,539	256,535
■ 2013	263,498	292,164	415,145	105,716	9,356	38,613	86,923	79,443	49,618	13,533	69,390	309,713
■ 2014	289,624	301,917	455,852	104,564	7,504	62,532	103,665	92,581	51,007	18,515	71,224	368,350
■ 2015	321,047	321,410	443,069	125,241	11,083	69,894	125,802	104,232	73,623	12,637	163,159	504,709
■ 2016	451,149	470,047	639,556	174,693	19,378	103,691	200,792	144,791	118,858	40,207	63,661	605,208
■ 2017	527,828	534,177	654,562	192,808	15,554	138,860	206,139	147,247	144,119	34,102	93,831	560,548
■ 2018	538,742	569,228	765,119	203,076	17,822	106,349	173,538	139,789	150,621	43,933	122,110	627,410
■ 2019	569,539	568,870										

**SALES & TRANSIT/TRAILS TAX COLLECTION
IN COUNTY**



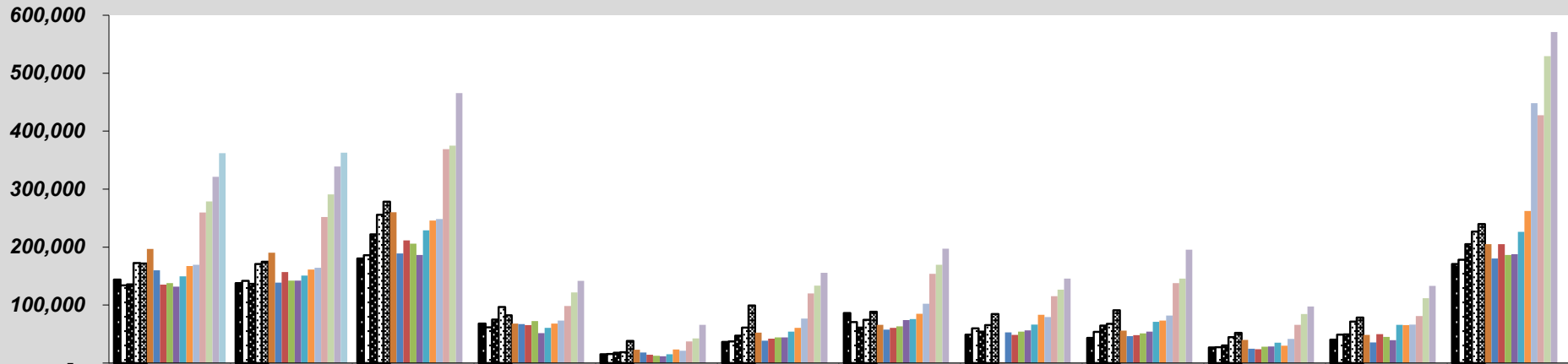
	January	February	March	April	May	June	July	August	September	October	November	December
■ 2003	19,438	18,776	17,844	15,101	15,976	11,878	10,915	10,351	11,306	9,571	11,896	26,170
□ 2004	19,232	18,366	19,494	17,714	12,728	12,706	9,567	10,818	12,595	11,144	11,287	28,812
▨ 2005	22,170	19,183	24,635	21,595	14,080	15,654	13,384	12,255	17,210	11,484	17,125	31,427
▩ 2006	31,834	24,882	28,583	21,213	16,998	21,677	16,108	16,757	23,420	19,132	21,852	38,638
▤ 2007	27,327	27,338	48,020	25,622	21,607	44,572	22,868	19,918	44,524	23,183	31,980	54,043
■ 2008	38,948	35,529	48,653	29,698	25,836	35,563	15,733	5,000	18,460	17,866	18,435	50,805
■ 2009	39,984	32,511	42,050	27,386	25,237	19,262	16,756	15,722	20,093	17,179	23,712	36,765
■ 2010	39,497	30,275	35,905	29,009	23,882	18,869	16,018	14,864	16,767	14,785	17,426	48,425
■ 2011	31,796	29,399	36,071	30,914	24,152	20,177	13,418	14,569	17,957	15,592	20,855	40,472
■ 2012	38,162	30,992	38,510	28,413	21,093	18,348	15,047	15,259	21,503	14,584	22,724	39,260
■ 2013	35,340	38,071	39,188	30,223	25,179	25,377	18,257	19,097	33,002	20,257	22,001	42,911
■ 2014	41,191	34,272	46,322	29,636	26,531	22,842	19,033	19,736	29,589	17,467	18,974	46,181
■ 2015	38,786	35,104	48,235	27,869	24,708	28,180	16,996	17,891	27,820	17,458	19,087	63,367
■ 2016	63,171	52,194	58,438	46,480	38,558	40,839	26,584	29,702	48,452	37,827	39,936	59,958
■ 2017	65,491	57,345	54,410	43,239	38,217	43,317	24,624	26,262	34,566	25,753	38,577	65,780
■ 2018	56,909	60,316	58,721	49,992	38,394	36,024	22,989	25,776	52,461	27,757	35,432	86,049
■ 2019	54,285	52,989										

**SALES & TRANSIT/TRAILS TAX COLLECTION
OUTSIDE COUNTY**



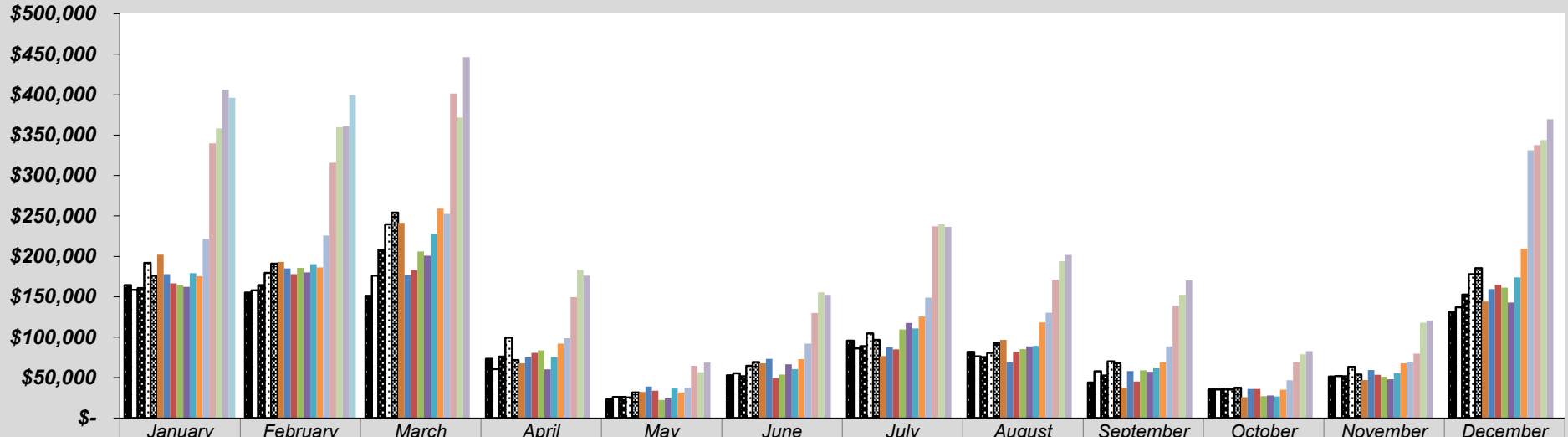
	January	February	March	April	May	June	July	August	September	October	November	December
■ 2003	19,558	19,194	28,802	19,973	12,938	46,007	17,810	14,400	24,336	17,245	17,230	41,213
□ 2004	24,533	24,628	28,023	15,620	13,985	25,551	21,432	23,124	20,871	17,956	19,583	43,180
▣ 2005	27,223	23,697	28,257	18,850	16,549	22,514	24,191	27,899	24,485	21,752	22,738	55,138
▤ 2006	31,763	29,011	42,310	22,728	18,280	32,263	22,683	29,072	59,718	29,689	31,805	62,056
▥ 2007	50,536	41,286	61,510	38,929	33,074	66,455	59,872	47,846	49,770	36,588	47,282	86,867
■ 2008	43,616	32,099	62,989	29,901	23,513	41,505	28,575	15,610	20,143	32,977	28,423	65,793
■ 2009	38,927	34,146	69,090	24,162	18,111	47,729	21,750	24,750	50,449	18,402	19,545	64,161
■ 2010	33,885	35,610	54,160	26,002	19,378	35,334	13,920	16,628	35,661	10,418	21,467	63,503
■ 2011	30,516	29,181	46,878	23,149	20,780	32,228	19,103	18,475	26,188	18,728	28,510	73,588
■ 2012	43,820	33,106	45,251	23,395	19,064	24,622	23,762	22,354	33,298	22,893	24,018	59,557
■ 2013	38,347	33,140	41,922	26,782	20,315	28,290	19,696	18,935	37,231	24,304	33,179	93,736
■ 2014	41,734	35,161	49,091	25,053	24,438	33,434	27,089	24,902	43,626	24,635	28,400	76,972
■ 2015	39,004	31,614	45,875	26,148	23,364	45,342	25,930	24,901	39,132	33,557	30,997	166,207
■ 2016	52,094	42,925	70,046	39,044	35,723	58,199	34,263	31,318	60,471	37,384	39,274	128,732
■ 2017	52,739	47,915	73,140	45,856	38,841	62,619	46,219	48,635	80,818	63,056	61,787	224,433
■ 2018	62,162	66,740	100,751	49,990	46,406	75,559	56,644	49,791	99,437	59,491	55,751	259,975
■ 2019	82,839	72,019										

**SALES & TRANSIT/TRAILS TAX COLLECTION
RETAIL**



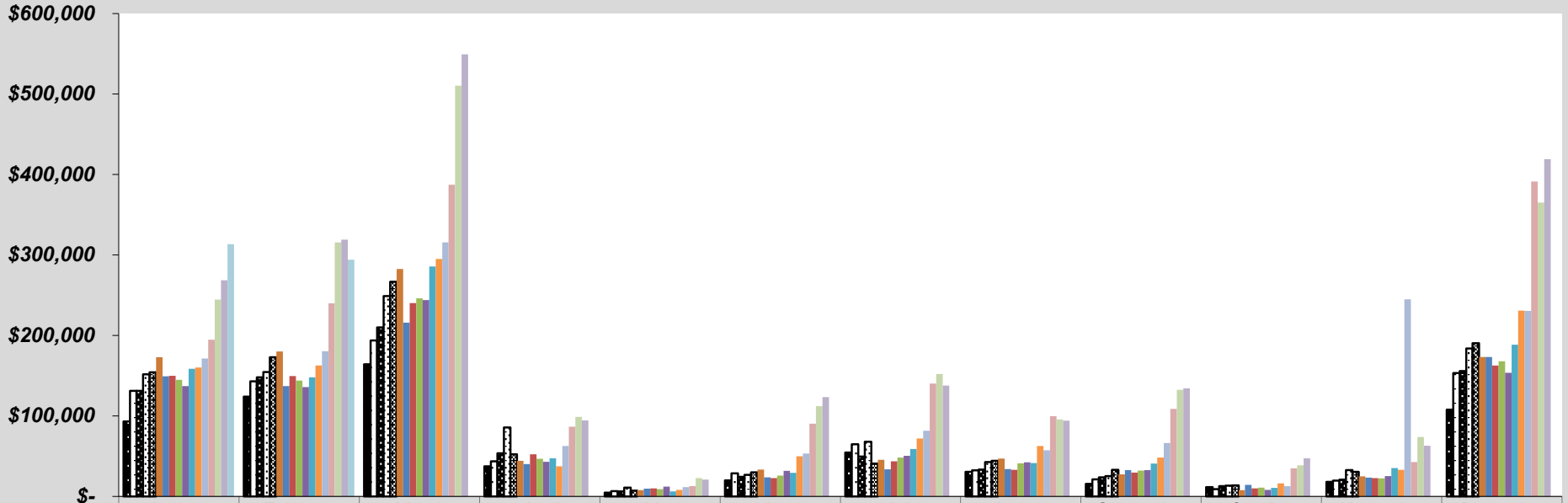
	January	February	March	April	May	June	July	August	September	October	November	December
■ 2003	143,853	138,061	180,322	68,254	15,019	36,459	86,450	48,853	43,411	26,818	40,485	170,929
□ 2004	134,027	141,965	185,800	61,439	15,698	37,283	70,845	59,997	53,695	27,357	48,923	178,325
▣ 2005	135,842	136,529	221,859	75,009	17,953	47,192	61,070	54,271	64,559	30,328	49,410	204,921
▤ 2006	172,441	170,889	255,944	96,680	18,826	61,102	74,545	65,526	67,630	44,766	71,608	226,795
▥ 2007	171,630	174,663	278,155	82,191	38,171	99,368	88,600	84,484	91,183	52,028	78,259	239,875
▧ 2008	196,774	190,185	259,964	67,851	22,909	52,513	65,726	1,334	55,883	39,718	48,545	204,862
▨ 2009	160,021	138,777	188,917	67,338	18,171	38,719	57,545	52,829	46,508	24,684	35,599	180,277
▩ 2010	135,351	156,779	211,409	65,656	14,205	41,961	60,773	48,741	47,976	23,967	49,746	205,036
▪ 2011	137,789	142,197	205,968	72,394	12,758	44,336	63,234	54,273	51,223	28,183	45,173	186,450
▫ 2012	131,584	142,022	186,441	51,662	11,876	44,121	73,982	56,521	54,088	28,587	39,307	187,752
▬ 2013	149,706	150,901	228,702	60,486	15,313	54,189	75,957	66,525	71,131	35,273	65,692	226,484
▭ 2014	167,323	161,359	245,915	67,866	23,421	60,586	84,806	83,332	73,378	30,056	65,498	262,121
▮ 2015	169,407	164,456	248,354	73,165	21,258	76,878	102,255	79,485	81,759	41,416	66,307	448,244
▯ 2016	259,773	251,870	368,954	98,324	37,444	120,079	153,872	115,098	137,751	66,048	81,252	427,649
▰ 2017	278,797	290,957	374,849	121,825	42,540	133,383	169,312	126,647	145,499	84,532	112,050	529,369
▱ 2018	321,165	339,138	465,484	141,541	65,711	155,451	197,245	145,833	195,707	97,361	132,948	571,003
▲ 2019	362,009	363,015										

**SALES & TRANSIT/TRAILS TAX COLLECTION
RESTAURANT & BAR**



	January	February	March	April	May	June	July	August	September	October	November	December
■ 2003	\$164,582	155,155	151,222	73,146	22,973	52,855	95,847	81,754	43,818	35,481	51,305	131,545
□ 2004	\$158,689	157,872	176,026	60,534	25,976	55,420	86,183	76,285	57,834	35,322	51,886	137,032
■ 2005	\$160,716	164,528	208,250	75,858	26,048	51,813	88,833	75,476	52,671	36,413	51,593	152,701
■ 2006	\$191,716	179,567	239,755	99,493	25,324	64,560	104,770	80,733	70,236	35,351	63,444	177,979
■ 2007	\$176,124	190,882	254,122	71,592	31,509	69,187	96,806	92,985	67,935	37,615	53,682	185,346
■ 2008	\$201,955	192,991	241,393	67,594	32,230	67,657	76,727	96,666	37,366	25,876	46,969	144,155
■ 2009	\$177,870	185,113	176,747	75,062	39,105	73,097	87,487	69,007	58,257	35,967	59,467	159,512
■ 2010	\$166,655	177,945	182,945	80,477	33,824	49,476	84,945	81,800	45,336	35,993	53,496	164,956
■ 2011	\$164,578	185,784	206,022	83,668	22,442	53,848	109,632	85,146	59,196	26,974	51,043	161,332
■ 2012	\$162,329	180,221	200,936	60,381	24,391	66,518	117,719	88,737	57,114	27,907	47,855	142,850
■ 2013	\$179,383	190,206	228,308	75,510	36,641	60,472	110,919	89,132	62,414	26,599	55,804	174,096
■ 2014	\$175,608	186,315	259,173	92,109	31,776	73,034	125,581	118,312	68,897	35,175	67,762	209,432
■ 2015	\$221,429	225,858	252,678	98,705	37,771	91,964	149,149	130,307	88,663	46,665	69,613	331,121
■ 2016	\$339,808	315,853	401,241	149,599	64,717	129,941	237,039	171,370	139,018	69,052	79,799	337,740
■ 2017	\$358,140	359,906	371,879	183,250	56,610	155,619	239,523	194,104	152,344	78,789	117,796	343,742
■ 2018	\$405,934	360,982	446,358	176,294	68,604	152,520	236,477	201,728	170,289	82,749	120,551	369,505
■ 2019	\$396,280	399,384										

**LODGING, ACCOMMODATION & TRANSIT/TRAILS TAX COLLECTION
LODGING & ACCOMMODATION**



	January	February	March	April	May	June	July	August	September	October	November	December
2003	\$93,261	123,883	164,272	37,522	4,713	19,834	54,703	30,668	15,745	11,510	18,079	107,769
2004	\$131,105	142,907	193,888	43,621	6,705	28,565	64,974	32,431	21,203	8,958	19,799	153,312
2005	\$131,163	148,114	210,006	53,769	6,293	24,364	49,524	33,455	23,848	12,802	20,833	155,768
2006	\$151,710	154,652	249,036	85,807	10,947	26,829	68,111	42,812	25,334	13,368	32,679	183,782
2007	\$154,306	172,844	266,603	52,463	7,106	30,041	40,991	44,330	33,084	13,674	30,486	190,511
2008	\$172,942	180,032	282,480	44,407	7,761	33,491	45,583	47,216	27,568	7,765	25,082	173,178
2009	\$149,318	137,171	215,961	40,330	9,827	23,683	33,729	33,986	32,668	14,352	23,470	173,308
2010	\$149,765	149,730	240,103	52,497	10,094	22,741	43,553	32,942	29,629	9,916	22,864	162,690
2011	\$145,055	143,887	246,277	46,712	9,197	25,935	48,298	41,195	32,054	10,832	22,597	167,864
2012	\$136,974	135,882	244,000	43,097	12,262	31,738	50,561	42,407	32,665	8,087	25,331	153,559
2013	\$158,620	148,115	285,673	47,479	6,301	29,452	59,059	41,608	40,927	10,588	35,236	188,426
2014	\$160,080	162,699	294,972	37,320	7,984	49,830	71,947	62,806	48,295	16,189	33,054	230,844
2015	\$171,278	180,392	315,771	62,688	11,414	53,163	81,727	57,509	66,310	12,863	245,046	230,507
2016	\$194,879	240,002	387,339	86,691	12,808	90,268	140,270	99,814	108,649	34,965	42,829	391,429
2017	\$244,615	315,524	510,268	98,823	22,687	112,065	152,005	95,706	132,485	38,747	73,924	365,135
2018	\$268,608	319,140	549,263	94,330	20,876	123,415	137,691	93,974	134,329	47,492	63,094	419,077
2019	\$313,408	294,076	-	-	-	-	-	-	-	-	-	-