



MEMO

SOLICITATION RFB for the Installation of Battery Electric Bus Charging Infrastructure

DATE February 10th, 2025

SUBJECT Addendum 2 Technical Diagrams of the Town of Winter Park Transit Maintenance Facility

Addendum 2

Addendum 2 is the attached technical diagrams for the Town of Winter Park Transit Maintenance Facility.



3003 Larimer Street
Denver, Colorado 80205
phone 303.861.5704
www.ozarch.com



**WINTER PARK PUBLIC TRANSIT
OPERATIONS FACILITY**
275 GCR 5103, FRASER, CO 80442

PROJ. NO: 120116.00
DRAWN: OZ
CHECKED: OZ
APPROVED: OZ
DATE: 6/30/2022
REVISIONS:

© OZ ARCHITECTURE

WINTER PARK PUBLIC
TRANSIT OPERATIONS
FACILITY
ISSUED FOR:
100% CONSTRUCTION
DOCUMENTS

SHEET TITLE:
OVERALL FLOOR PLAN

SCALE: 3/32" = 1'-0"
SHEET NUMBER

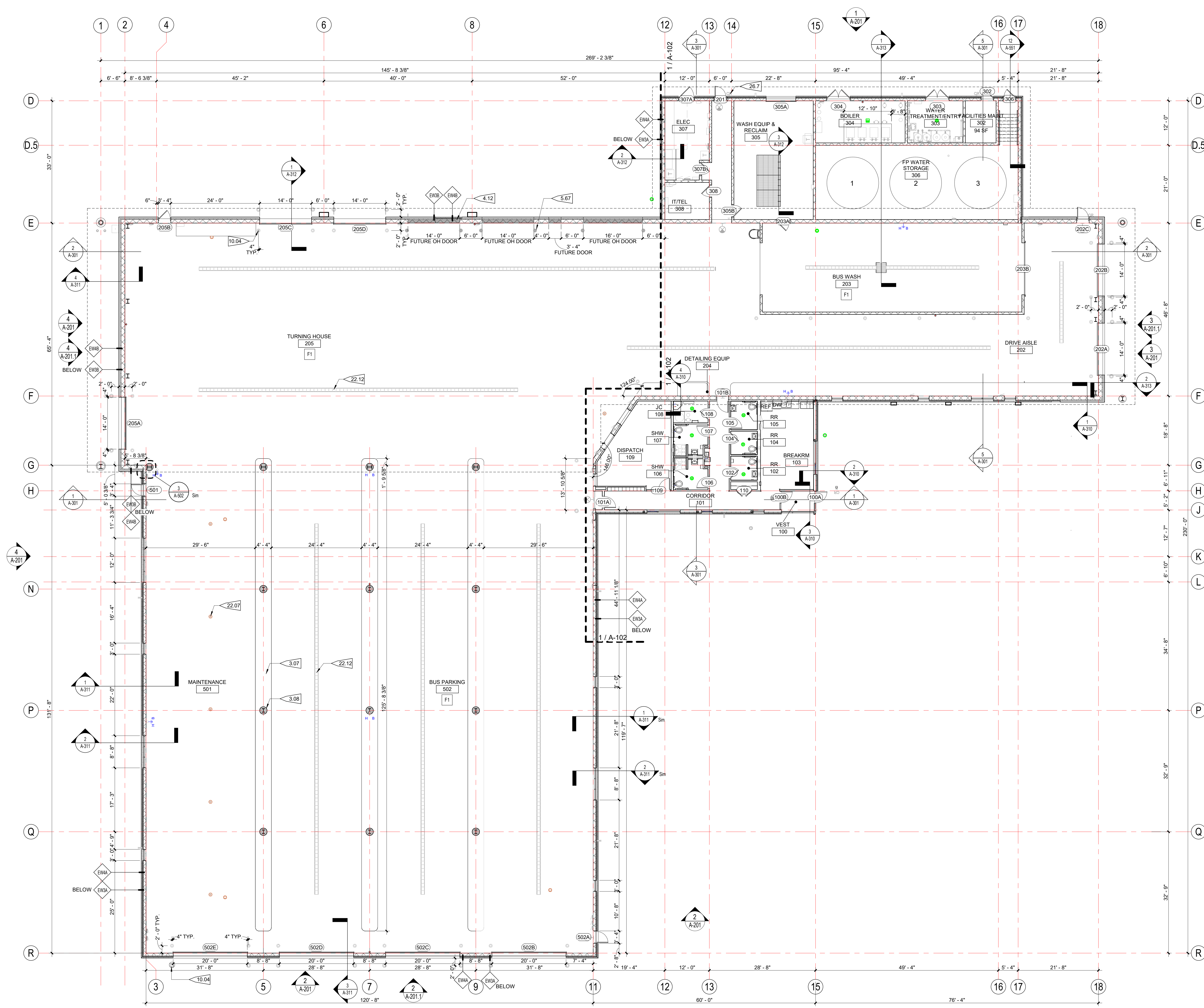
A-101

- FLOOR PLAN NOTES**
- 1 EL. 100'-0" (LEVEL 1) EQUATES TO USGS DATUM ELEVATION OF 8655.50'
 - 2 EXTERIOR DIMENSIONS ARE TO FACE OF SHEATHING, FACE OF CONCRETE/MASONRY, COLUMN CENTERLINE, OR CENTERLINE OF WINDOW U.I.O.
 - 3 INTERIOR DIMENSIONS ARE TO FACE OF STUD, FACE OF CONCRETE/MASONRY, OR COLUMN CENTERLINE U.I.O. DIMENSIONS DESIGNATED AS "CLEAR" OR "HOLD" SHALL BE MAINTAINED.
 - 4 SEE SHEET G-502 FOR PARTITION TYPES. SEE CODE PLANS, G-100 SERIES SHEETS, FOR RATINGS OF PARTITIONS. METAL STUD PARTITIONS ARE TYPE 23C, U.I.O.
 - 5 PARTITION TYPES INDICATED CONTINUE AROUND CORNERS U.I.O.
 - 6 MAINTAIN CONTINUITY OF RATED PARTITIONS AT HEAD AND BOTTOM OF PARTITION AND AT JOINTS WITH DISSIMILAR PARTITIONS WITH LISTED JOINT ASSEMBLIES.
 - 7 WHERE TWO DIFFERING PARTITION TYPES ABUT ALONG A CONTINUOUS LINE, THE CONTINUOUS FINISHED SURFACE OF THESE PARTITIONS SHALL ALIGN U.I.O.
 - 8 WHERE DOORS ARE NOT SPECIFICALLY LOCATED, PROVIDE A HINGE-SIDE JAMB DIMENSION OF 4" FROM DOOR OPENING TO ADJACENT PERPENDICULAR PARTITION.
 - 9 WHERE MECHANICAL DUCTWORK PENETRATES A COMPONENT OF THE FIRE-RATED ASSEMBLY, PROVIDE FIRE AND/OR SMOKE DAMPERS IN ACCORDANCE WITH IBC CHAPTER 7.
 - 10 PROVIDE 1/2" CLEARANCE FROM DUCTWORK FOR VIBRATION ISOLATION.
 - 11 THERE SHALL BE NO EXPOSED PIPES, DUCTS, ETC. IN THE ADMIN AREA. ALL SUCH LINES SHALL BE CONCEALED OR FURRED UNLESS SPECIFICALLY NOTED AS EXPOSED CONSTRUCTION.
 - 12 FIELD VERIFY DIMENSIONS PRIOR TO FABRICATION OF CASEWORK, MILLWORK AND OTHER BUILT-IN ITEMS.
 - 13 SEE SHEET G-401 FOR MOUNTING HEIGHTS AND BLOCKING FOR FUTURE GRAB BARS.
 - 14 SEE SHEET A-600 FOR DOOR SCHEDULE.

PROJECT FLAGNOTES

NO.	FLAGNOTE
3.07	CONCRETE CURB, RE. STRUCT
3.08	FORMED CONCRETE COLUMN BASE, RE. STRUCT
4.12	INDEPENDENT COURSING AT FUTURE PHASE OH DOOR OPENINGS INDICATED BY GREY HATCH
5.67	PROVIDE FILLABLE BOLLARD SLEEVE FOR FUTURE PHASE DOOR OPENING
10.04	6'-0" TALL CONCRETE FILLED BOLLARD W/ PREFABRICATED TOP, PAINTED YELLOW
22.07	AREA DRAIN, RE. PLUMBING
22.12	TRENCH DRAIN, RE. PLUMBING
26.7	CARD READER

See RFI 037



1 OVERALL FLOOR PLAN
3/32" = 1'-0"

7/5/2022 9:45:50 PM
BM 3607/120116 Winter Park Maintenance/20116.00 Winter Park Maintenance_A21_Central.rvt

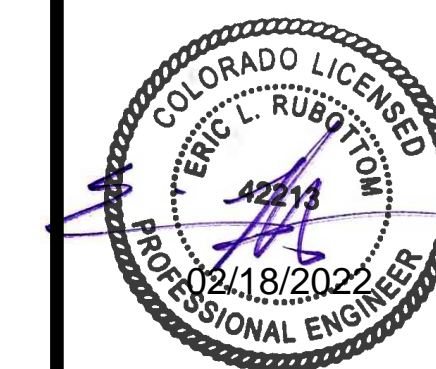
NOTES:

1. PROVIDE CONDUIT SLEEVES THROUGH WALLS TO FACILITATE CABLING. PROVIDE FIRESTOPPING AS REQUIRED.
2. ALL LOW VOLTAGE CONDUIT STUBBED OUT ABOVE FINISHED CEILINGS SHALL HAVE LONG RADIUS SWEEPS.
3. CABLE TIES SHALL BE RELEASABLE AND COMPOSED OF HOOK AND LOOP, RUBBER OR SOFT POLYMER. ZIP-TIES OR EQUAL SHALL NOT BE USED.
4. CABLING SHALL BE ROUTED VIA CONDUIT FROM OUTLET BOX TO ABOVE ACCESSIBLE CEILING.
5. HOMERUN CABLING TO SERVING DISTRIBUTION FRAME. USE J-HOOKS FOR PATHWAYS ABOVE ACCESSIBLE CEILING.
6. CABLING SHALL NOT RUN UNSUPPORTED FOR LENGTHS GREATER THAN 5'-0". ALL VOICE/DATA CABLING SHALL BE TERMINATED ON RACK MOUNTED PATCH PANELS.
7. PROVIDE EXPANSION CAPABILITY IN CONDUIT CROSSING BUILDING EXPANSION JOINTS. RE: ARCHITECTURAL DRAWINGS FOR LOCATIONS.
8. ALL INFRASTRUCTURE SUPPORTING VOICE/DATA STRUCTURED CABLING SYSTEMS (RACKING, GROUNDING, PATHWAYS, ETC.) SHALL MEET BICSI STANDARDS.
9. CONTRACTOR TO PROVIDE BLOCKING AT PROJECTOR AND DISPLAY LOCATIONS TO SUPPORT 100LBS.
10. LIGHT LINEWEIGHT INDICATES OFFICE EQUIPMENT.

FLAG NOTES:



3003 Larimer Street
Denver, Colorado 80205
phone 303.861.5704
www.ozarch.com



THIS IS IDENTICAL TO THE OFFICIAL DIGITALLY SEALED DOCUMENTS PRODUCED ON THE SAME DATE. THIS VERSION IS BEING SUBMITTED AT THE REQUEST OF THE A/E. THE OFFICIAL DIGITALLY SEALED VERSION IS AVAILABLE FROM THE ENGINEER UPON REQUEST.

WINTER PARK PUBLIC TRANSIT OPERATIONS FACILITY
275 GCR 5103, FRASER, CO 80442

PROJ. NO. 120116
DRAWN: JEB
CHECKED: ELR
APPROVED: ELR
DATE: 02/18/2022

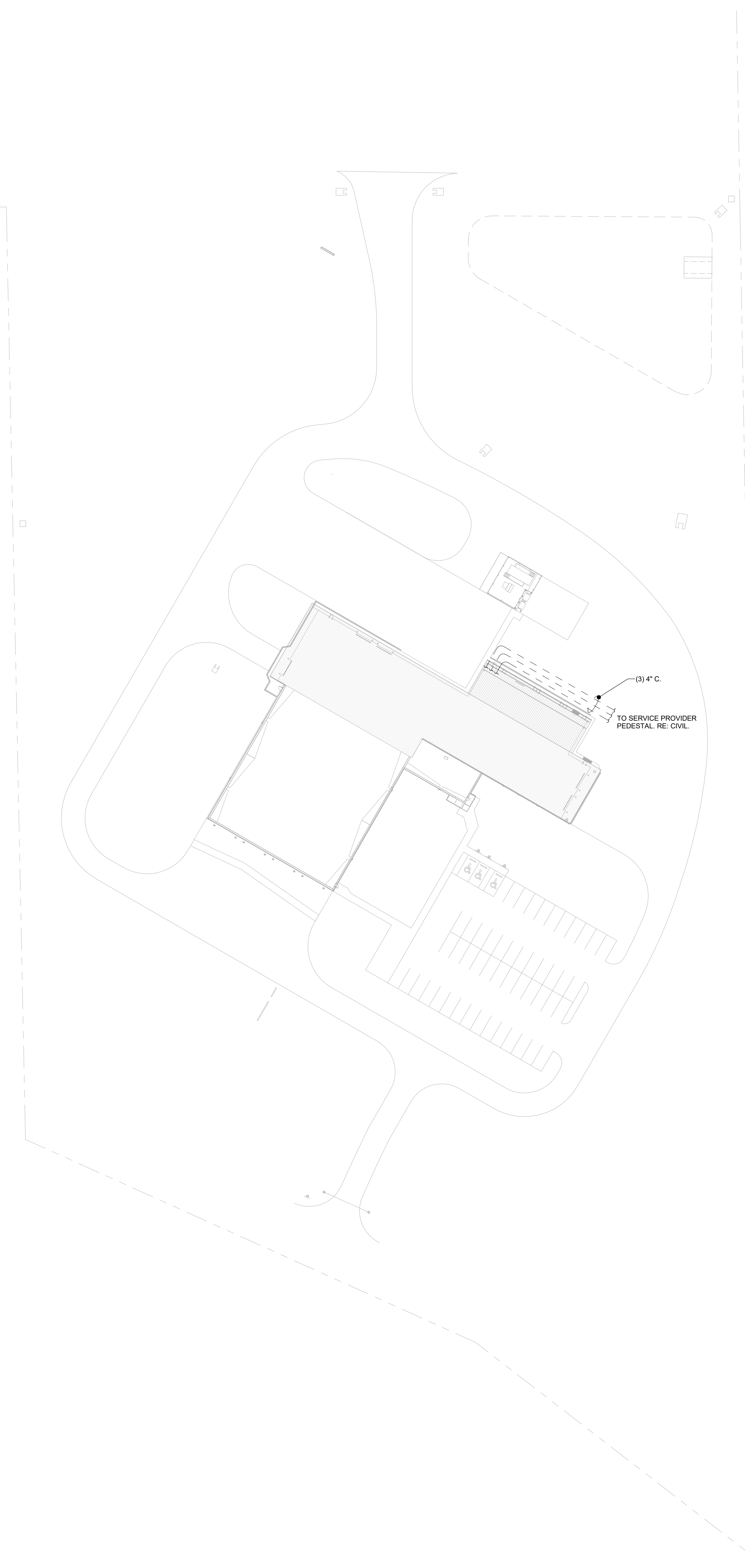
© OZ ARCHITECTURE

WINTER PARK PUBLIC TRANSIT OPERATIONS FACILITY
ISSUED FOR:
100% CONSTRUCTION DOCUMENTS

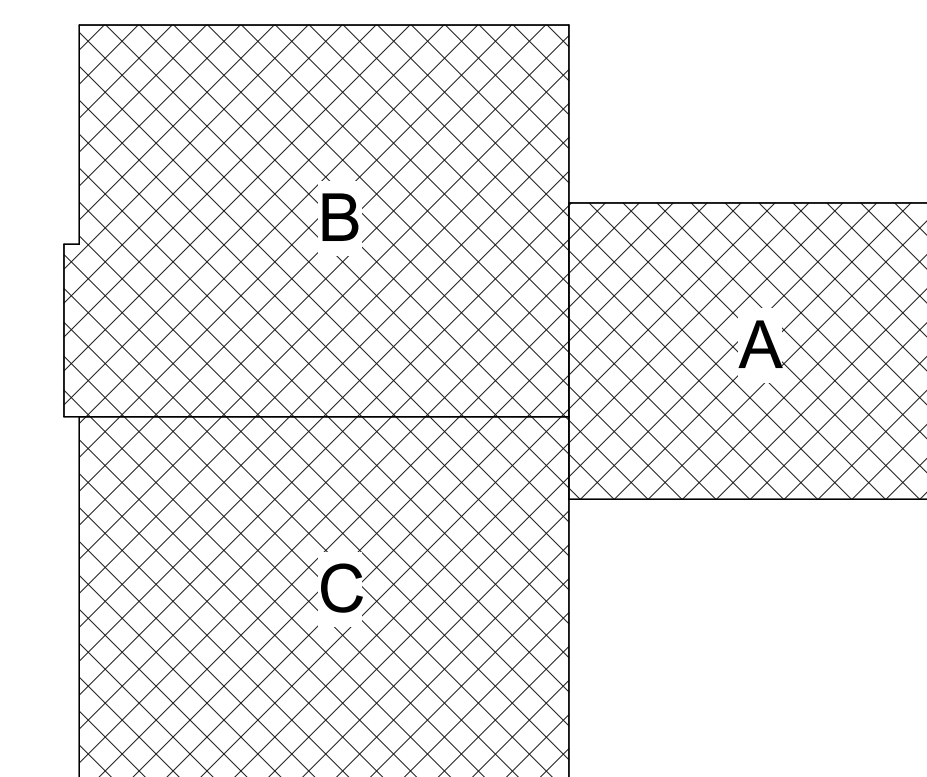
SHEET TITLE:
TECHNOLOGY SYSTEMS SITE PLAN

SCALE: 1" = 50'-0"
SHEET NUMBER

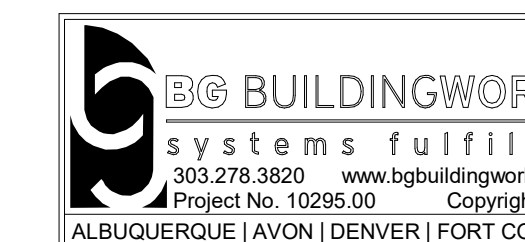
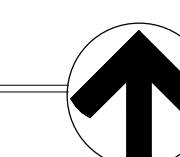
TS-100

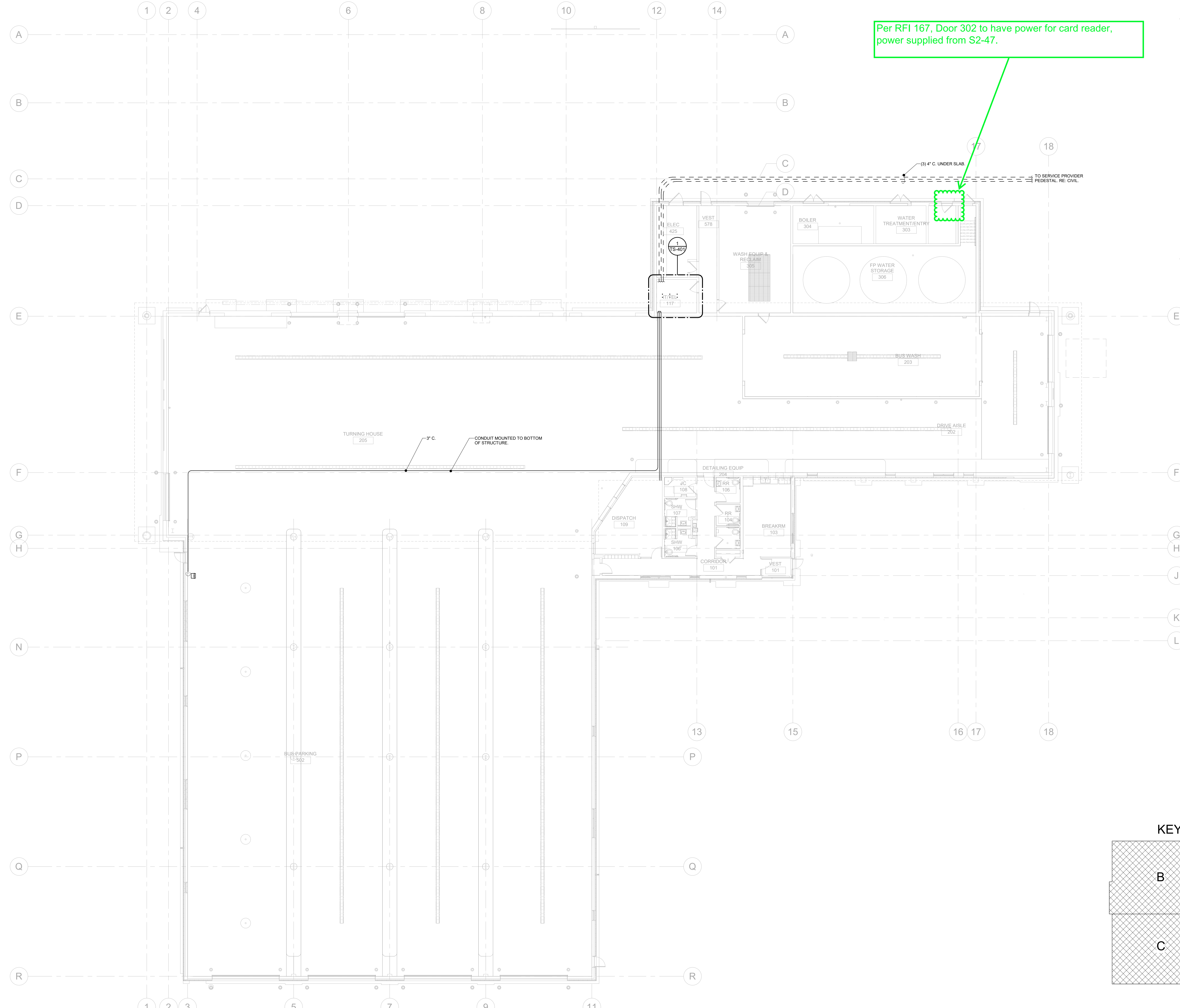


KEY PLAN



TECHNOLOGY SITE PLAN
SCALE: 1" = 50'-0"

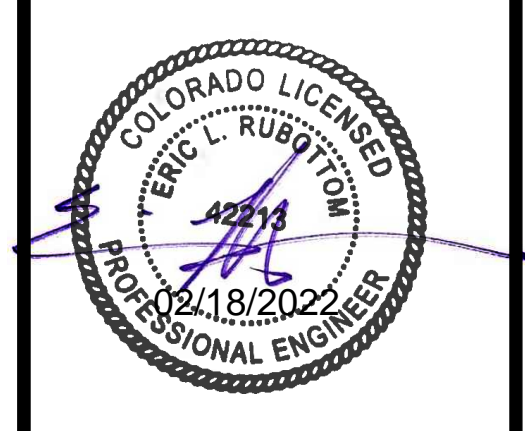




- NOTES:**
1. PROVIDE CONDUIT SLEEVES THROUGH WALLS TO FACILITATE CABLING. PROVIDE FIRESTOPPING AS REQUIRED.
 2. ALL LOW VOLTAGE CONDUIT STUBBED OUT ABOVE FINISHED CEILINGS SHALL HAVE LONG RADIUS SWEEPS.
 3. CABLE TIES SHALL BE RELEASEABLE AND COMPOSED OF HOOK AND LOOP, RUBBER OR SOFT POLYMER. ZIP-TIES OR EQUAL SHALL NOT BE USED.
 4. CABLING SHALL BE ROUTED VIA CONDUIT FROM OUTLET BOX TO ABOVE ACCESSIBLE CEILING.
 5. HOMERUN CABLING TO SERVING DISTRIBUTION FRAME. USE J-HOOKS FOR PATHWAYS ABOVE ACCESSIBLE CEILING.
 6. CABLING SHALL NOT RUN UNSUPPORTED FOR LENGTHS GREATER THAN 5'-0". ALL VOICE/DATA CABLING SHALL BE TERMINATED ON RACK MOUNTED PATCH PANELS.
 7. PROVIDE EXPANSION CAPABILITY IN CONDUIT CROSSING BUILDING EXPANSION JOINTS. RE: ARCHITECTURAL DRAWINGS FOR LOCATIONS.
 8. ALL INFRASTRUCTURE SUPPORTING VOICE/DATA STRUCTURED CABLING SYSTEMS (RACKING, GROUNDING, PATHWAYS, ETC.) SHALL MEET BICSI STANDARDS.
 9. CONTRACTOR TO PROVIDE BLOCKING AT PROJECTOR AND DISPLAY LOCATIONS TO SUPPORT 100LBS.
 10. LIGHT LINEWEIGHT INDICATES OFFICE EQUIPMENT.

FLAG NOTES:

OZ ARCHITECTURE
 3003 Larimer Street
 Denver, Colorado 80205
 phone 303.861.5704
 www.ozarch.com

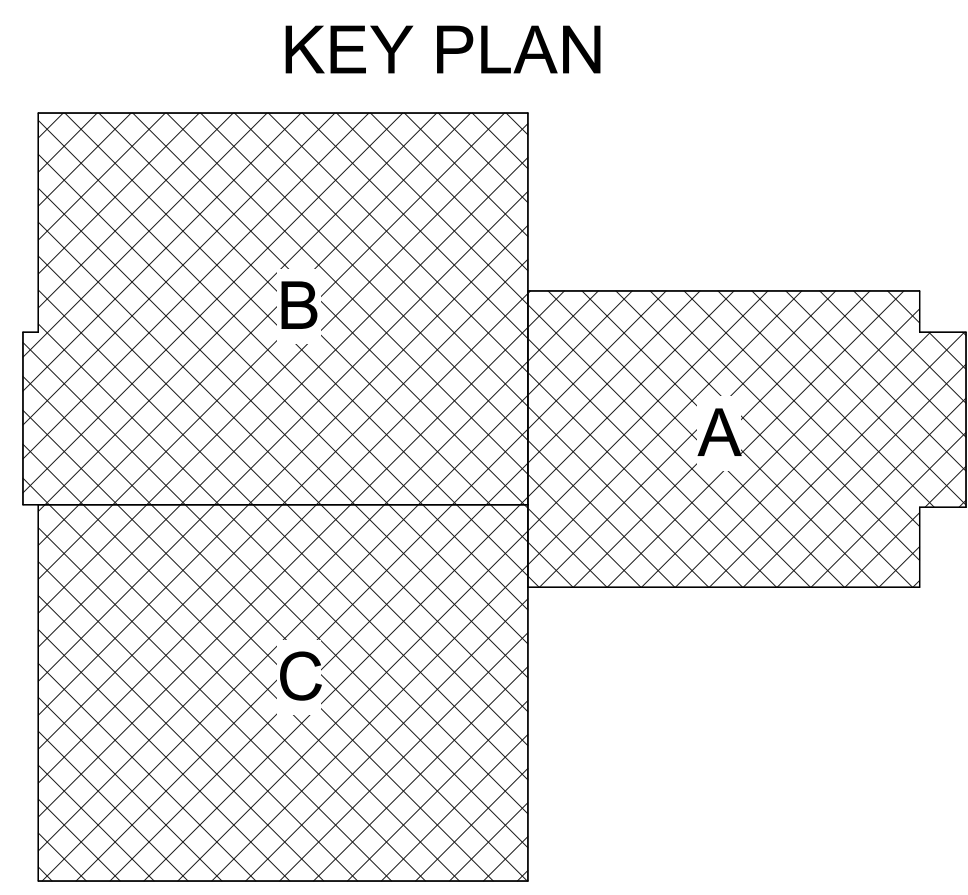


THIS IS IDENTICAL TO THE OFFICIAL DIGITALLY SEALED DOCUMENTS PRODUCED ON THE SAME DATE. THIS VERSION IS BEING SUBMITTED AT THE REQUEST OF THE A/E. THE OFFICIAL DIGITALLY SEALED VERSION IS AVAILABLE FROM THE ENGINEER UPON REQUEST.

WINTER PARK PUBLIC TRANSIT OPERATIONS FACILITY
 275 GCR 5103, FRASER, CO 80442

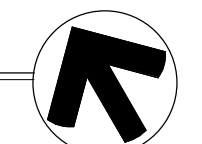
PROJ. NO. 120116
 DRAWN: JEB
 CHECKED: ELR
 APPROVED: ELR
 DATE: 02/18/2022
 1 07.14.21 ADDENDUM 1
 © OZ ARCHITECTURE

WINTER PARK PUBLIC TRANSIT OPERATIONS FACILITY
 ISSUED FOR:
 100% CONSTRUCTION DOCUMENTS
 SHEET TITLE:
 TECHNOLOGY SYSTEMS LEVEL 1 FLOOR PLAN
 SCALE: 3/32" = 1'-0"
 SHEET NUMBER
TS-101

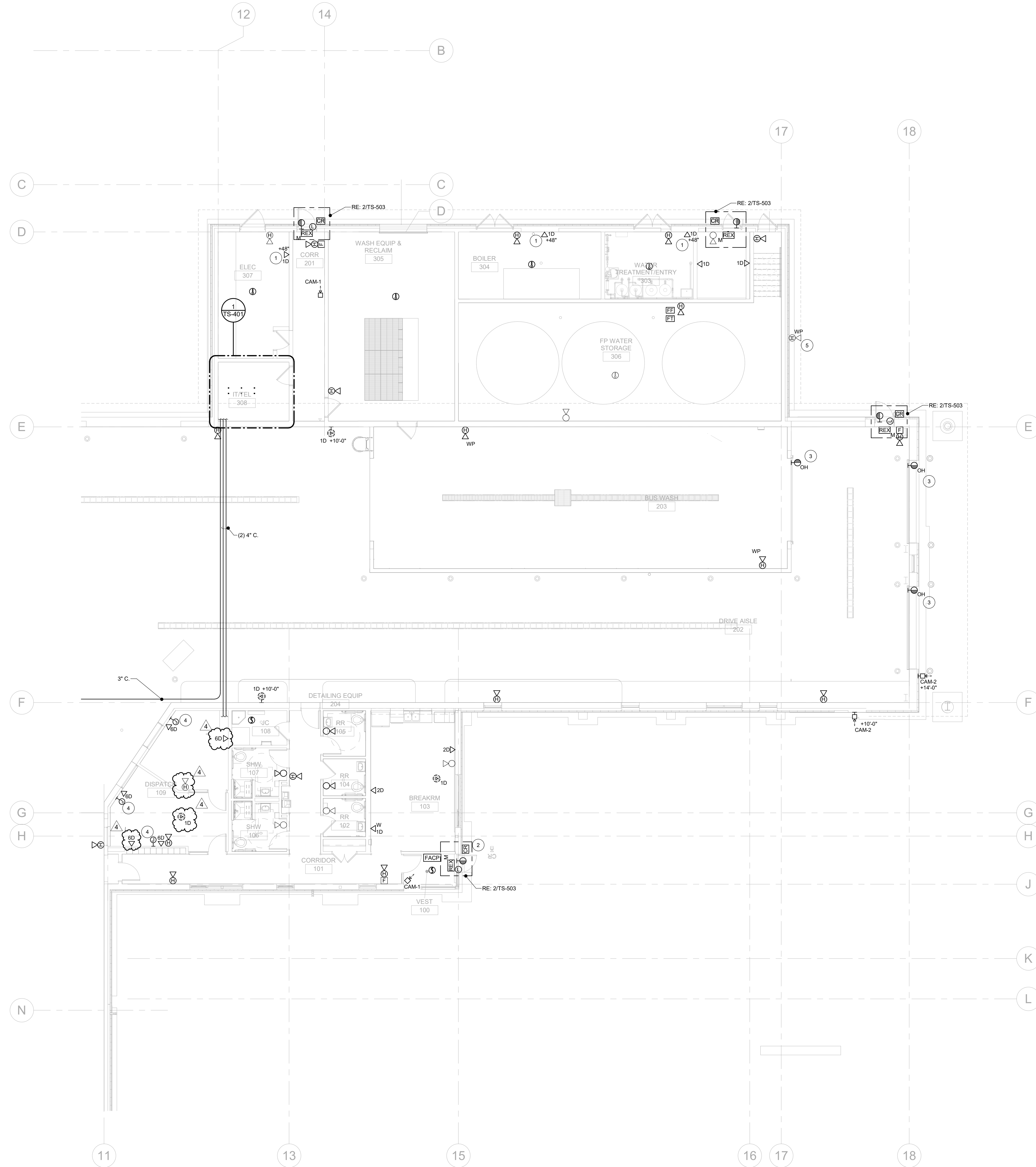


2/17/2022 4:53:38 PM BIM 360://120116 Winter Park Maintenance/0296.004-MEPT-101.rvt

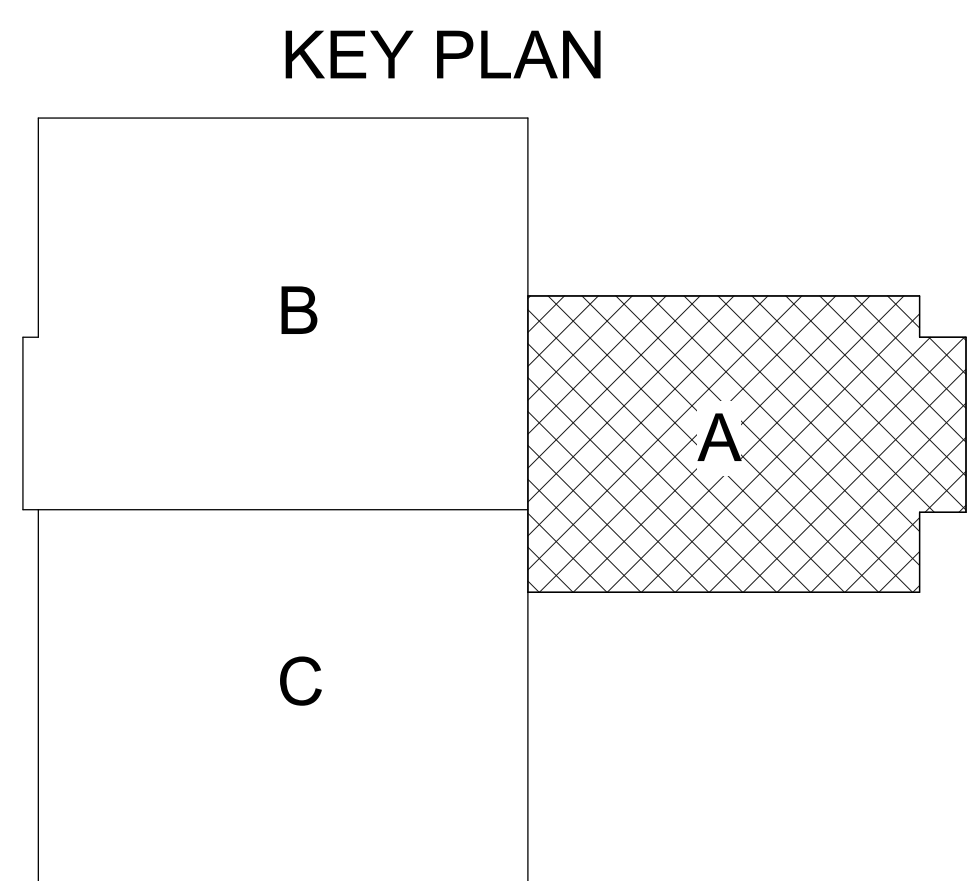
TECHNOLOGY LEVEL 1 FLOOR PLAN
 SCALE: 3/32" = 1'-0"



11/14/2022 10:01:18 PM BM 360/120116 Winter Park Maintenance\0296.00-MEPT-1.dwg



TECHNOLOGY LEVEL 1 FLOOR PLAN - SECTOR A
SCALE: 1/8" = 1'-0"



NOTES:

1. PROVIDE CONDUIT SLEEVES THROUGH WALLS TO FACILITATE CABLING. PROVIDE FIRESTOPPING AS REQUIRED.
2. ALL LOW VOLTAGE CONDUIT STUBBED OUT ABOVE FINISHED CEILINGS SHALL HAVE LONG RADIUS SWEEPS.
3. CABLE TIES SHALL BE RELEASABLE AND COMPOSED OF HOOK AND LOOP, RUBBER OR SOFT POLYMER. ZIP-TIES OR EQUAL SHALL NOT BE USED.
4. CABLING SHALL BE ROUTED VIA CONDUIT FROM OUTLET BOX TO ABOVE ACCESSIBLE CEILING.
5. HOMERUN CABLING TO SERVING DISTRIBUTION FRAME. USE J-HOOKS FOR PATHWAYS ABOVE ACCESSIBLE CEILING.
6. CABLING SHALL NOT RUN UNSUPPORTED FOR LENGTHS GREATER THAN 5'-0". ALL VOICE/DATA CABLING SHALL BE TERMINATED ON RACK MOUNTED PATCH PANELS.
7. PROVIDE EXPANSION CAPABILITY IN CONDUIT CROSSING BUILDING EXPANSION JOINTS. RE: ARCHITECTURAL DRAWINGS FOR LOCATIONS.
8. ALL INFRASTRUCTURE SUPPORTING VOICE/DATA STRUCTURED CABLING SYSTEMS (TRACING, GROUNDING, PATHWAYS, ETC.) SHALL MEET BICSI STANDARDS.
9. CONTRACTOR TO PROVIDE BLOCKING AT PROJECTOR AND DISPLAY LOCATIONS TO SUPPORT 100LBS.
10. LIGHT LINEWEIGHT INDICATES OFCI EQUIPMENT.

FLAG NOTES:

1. DATA OUTLET FOR MECHANICAL CONTROLS. FIELD-COORDINATE EXACT LOCATION WITH MECHANICAL CONTRACTOR.
2. ADA PUSH BUTTONS TO BE COORDINATED WITH ACCESS CONTROL SYSTEM.
3. PROVIDE DOOR POSITION SENSOR FOR OVERHEAD DOOR. CONNECT TO ACCESS CONTROL SYSTEM FOR MONITORING PURPOSES. COORDINATE EXACT DETAILS WITH DOOR VENDOR.
4. PROVIDE J-BOX WITH CONDUIT SLEEVE TO ABOVE CEILING FOR OVERHEAD DOOR OPENERS. CONFIRM WITH OVERHEAD DOOR CONFIGURATION.
5. PROVIDE WEATHERPROOF HORNSTROBE NOTIFICATION APPLIANCE AT FIRE DEPARTMENT CONNECTION. IF REQUIRED. CONFIRM WITH FIRE PROTECTION VENDOR.



3003 Larimer Street
Denver, Colorado 80205
phone 303.861.5704
www.ozarch.com

**WINTER PARK PUBLIC TRANSIT
OPERATIONS FACILITY**
275 GCR 5103, FRASER, CO 80442

PROJ. NO. 120116
DRAWN: JEB
CHECKED: ELR
APPROVED: ELR
DATE: 11/14/2022
4 11.14.2022 ADDENDUM #2

© OZ ARCHITECTURE

WINTER PARK PUBLIC
TRANSIT OPERATIONS
FACILITY
ISSUED FOR:
ADDENDUM #2

SHEET TITLE:
TECHNOLOGY
SYSTEMS LEVEL 1
FLOOR PLAN - SECTOR
SCALE: 1/8" = 1'-0"
SHEET NUMBER

TS-102





3003 Larimer Street
Denver, Colorado 80205
phone 303.861.5704
www.ozarch.com



THIS IS IDENTICAL TO THE OFFICIAL DIGITALLY SEALED DOCUMENTS PRODUCED ON THE SAME DATE. THIS VERSION IS BEING SUBMITTED AT THE REQUEST OF THE A/E. THE OFFICIAL DIGITALLY SEALED VERSION IS AVAILABLE FROM THE ENGINEER UPON REQUEST.

WINTER PARK PUBLIC TRANSIT OPERATIONS FACILITY
275 GCR 5103, FRASER, CO 80442

PROJ. NO. 120116
DRAWN: JEB
CHECKED: ELR
APPROVED: ELR
DATE: 02/18/2022

© OZ ARCHITECTURE

WINTER PARK PUBLIC TRANSIT OPERATIONS FACILITY
ISSUED FOR:
100% CONSTRUCTION DOCUMENTS

SHEET TITLE:
TECHNOLOGY LEVEL 1 FLOOR PLAN - SECTOR B
SCALE: 1/8" = 1'-0"
SHEET NUMBER

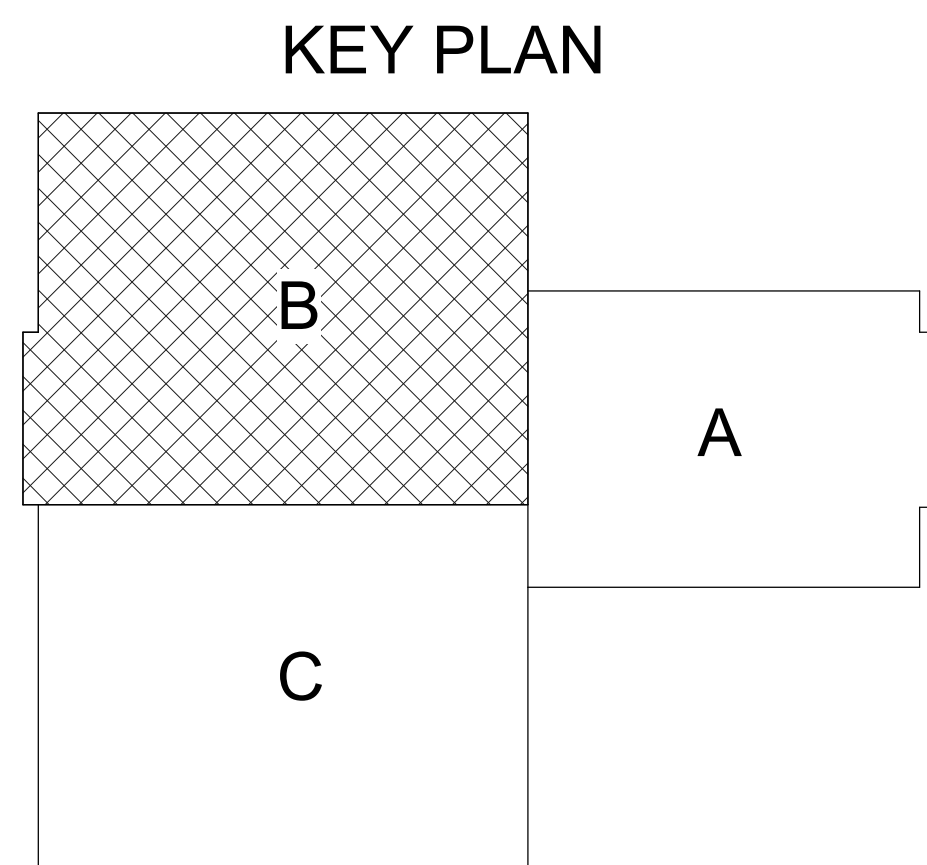
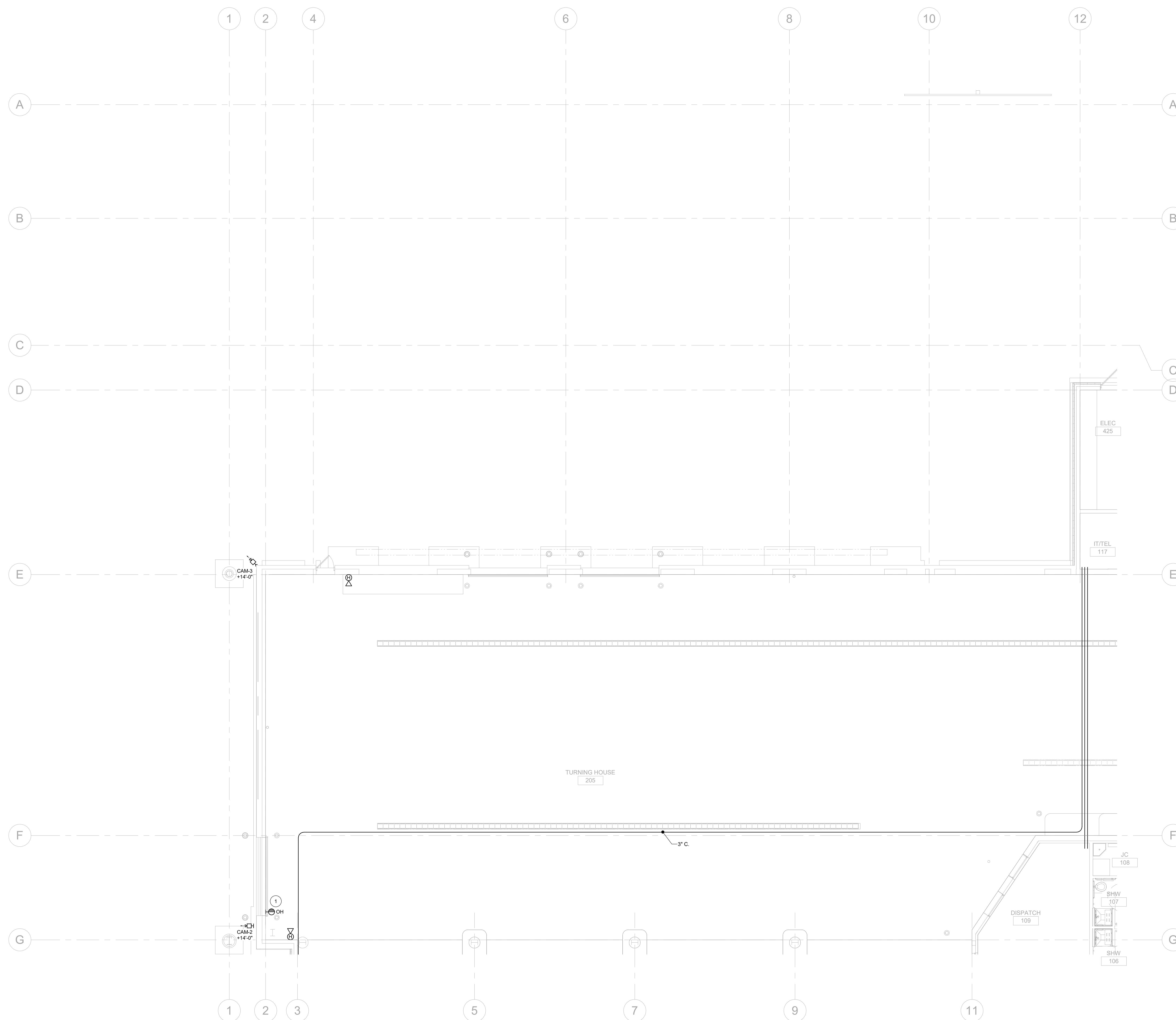
TS-103

NOTES:

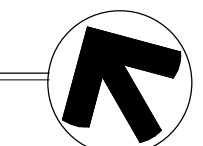
1. PROVIDE CONDUIT SLEEVES THROUGH WALLS TO FACILITATE CABLING. PROVIDE FIRESTOPPING AS REQUIRED.
2. ALL LOW VOLTAGE CONDUIT STUBBED OUT ABOVE FINISHED CEILINGS SHALL HAVE LONG RADIUS SWEEPS.
3. CABLE TIES SHALL BE RELEASABLE AND COMPOSED OF HOOK AND LOOP, RUBBER OR SOFT POLYMER. ZIP-TIES OR EQUAL SHALL NOT BE USED.
4. CABLING SHALL BE ROUTED VIA CONDUIT FROM OUTLET BOX TO ABOVE ACCESSIBLE CEILING.
5. HOMERUN CABLING TO SERVING DISTRIBUTION FRAME. USE J-HOOKS FOR PATHWAYS ABOVE ACCESSIBLE CEILING.
6. CABLING SHALL NOT RUN UNSUPPORTED FOR LENGTHS GREATER THAN 5'-0". ALL VOICE/DATA CABLING SHALL BE TERMINATED ON RACK MOUNTED PATCH PANELS.
7. PROVIDE EXPANSION CAPABILITY IN CONDUIT CROSSING BUILDING EXPANSION JOINTS. RE: ARCHITECTURAL DRAWINGS FOR LOCATIONS.
8. ALL INFRASTRUCTURE SUPPORTING VOICE/DATA STRUCTURED CABLING SYSTEMS (TRACKING, GROUNDING, PATHWAYS, ETC.) SHALL MEET BICSI STANDARDS.
9. CONTRACTOR TO PROVIDE BLOCKING AT PROJECTOR AND DISPLAY LOCATIONS TO SUPPORT 100LBS.
10. LIGHT LINEWEIGHT INDICATES OFFICE EQUIPMENT.

FLAG NOTES:

1. PROVIDE DOOR POSITION SENSOR FOR OVERHEAD DOOR. CONNECT TO ACCESS CONTROL SYSTEM FOR MONITORING PURPOSES. COORDINATE EXACT DETAILS WITH DOOR VENDOR.



TECHNOLOGY LEVEL 1 FLOOR PLAN - SECTOR B
SCALE: 1/8" = 1'-0"



NOTES:

1. PROVIDE CONDUIT SLEEVES THROUGH WALLS TO FACILITATE CABLING. PROVIDE FIRESTOPPING AS REQUIRED.
2. ALL LOW VOLTAGE CONDUIT STUBBED OUT ABOVE FINISHED CEILINGS SHALL HAVE LONG RADIUS SWEEPS.
3. CABLE TIES SHALL BE RELEASABLE AND COMPOSED OF HOOK AND LOOP, RUBBER OR SOFT POLYMER. ZIP-TIES OR EQUAL SHALL NOT BE USED.
4. CABLING SHALL BE ROUTED VIA CONDUIT FROM OUTLET BOX TO ABOVE ACCESSIBLE CEILING.
5. HOMERUN CABLING TO SERVING DISTRIBUTION FRAME. USE J-HOOKS FOR PATHWAYS ABOVE ACCESSIBLE CEILING.
6. CABLING SHALL NOT RUN UNSUPPORTED FOR LENGTHS GREATER THAN 5'-0". ALL VOICE/DATA CABLING SHALL BE TERMINATED ON RACK MOUNTED PATCH PANELS.
7. PROVIDE EXPANSION CAPABILITY IN CONDUIT CROSSING BUILDING EXPANSION JOINTS. RE: ARCHITECTURAL DRAWINGS FOR LOCATIONS.
8. ALL INFRASTRUCTURE SUPPORTING VOICE/DATA STRUCTURED CABLING SYSTEMS (RACKING, GROUNDING, PATHWAYS, ETC.) SHALL MEET BICSI STANDARDS.
9. CONTRACTOR TO PROVIDE BLOCKING AT PROJECTOR AND DISPLAY LOCATIONS TO SUPPORT 100LBS.
10. LIGHT LINEWEIGHT INDICATES OFFICE EQUIPMENT.

FLAG NOTES:

1. PROVIDE DOOR POSITION SENSOR FOR OVERHEAD DOOR. CONNECT TO ACCESS CONTROL SYSTEM FOR MONITORING PURPOSES. COORDINATE EXACT DETAILS WITH DOOR VENDOR.

OZ ARCHITECTURE
 3003 Larimer Street
 Denver, Colorado 80205
 phone 303.861.5704
 www.ozarch.com



THIS IS IDENTICAL TO THE OFFICIAL DIGITALLY SEALED DOCUMENTS PRODUCED ON THE SAME DATE. THIS VERSION IS BEING SUBMITTED AT THE REQUEST OF THE A/E. THE OFFICIAL DIGITALLY SEALED VERSION IS AVAILABLE FROM THE ENGINEER UPON REQUEST.

WINTER PARK PUBLIC TRANSIT OPERATIONS FACILITY
 275 GCR 5103, FRASER, CO 80442

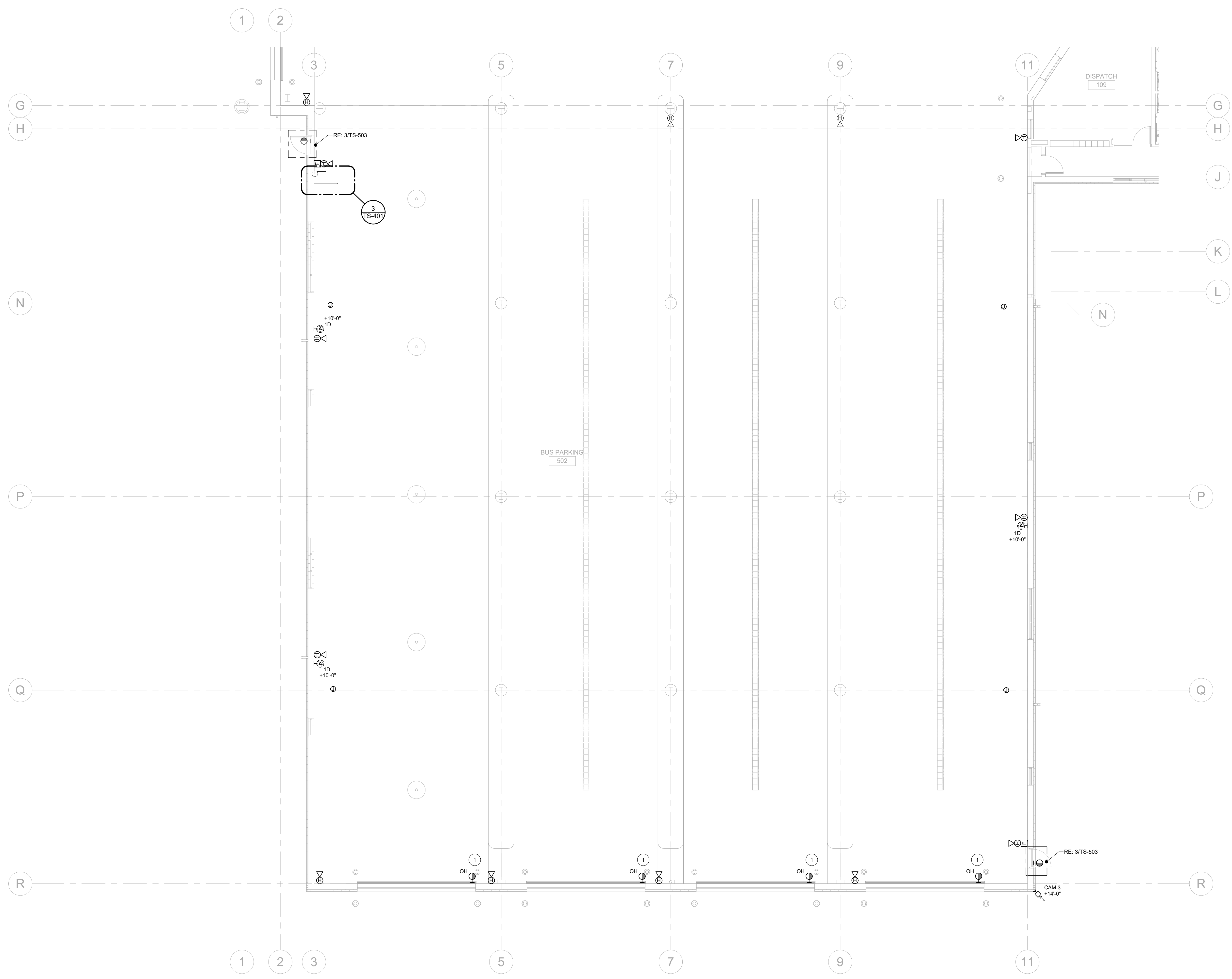
PROJ. NO. 120116
 DRAWN: JEB
 CHECKED: ELR
 APPROVED: ELR
 DATE: 02/18/2022

© OZ ARCHITECTURE

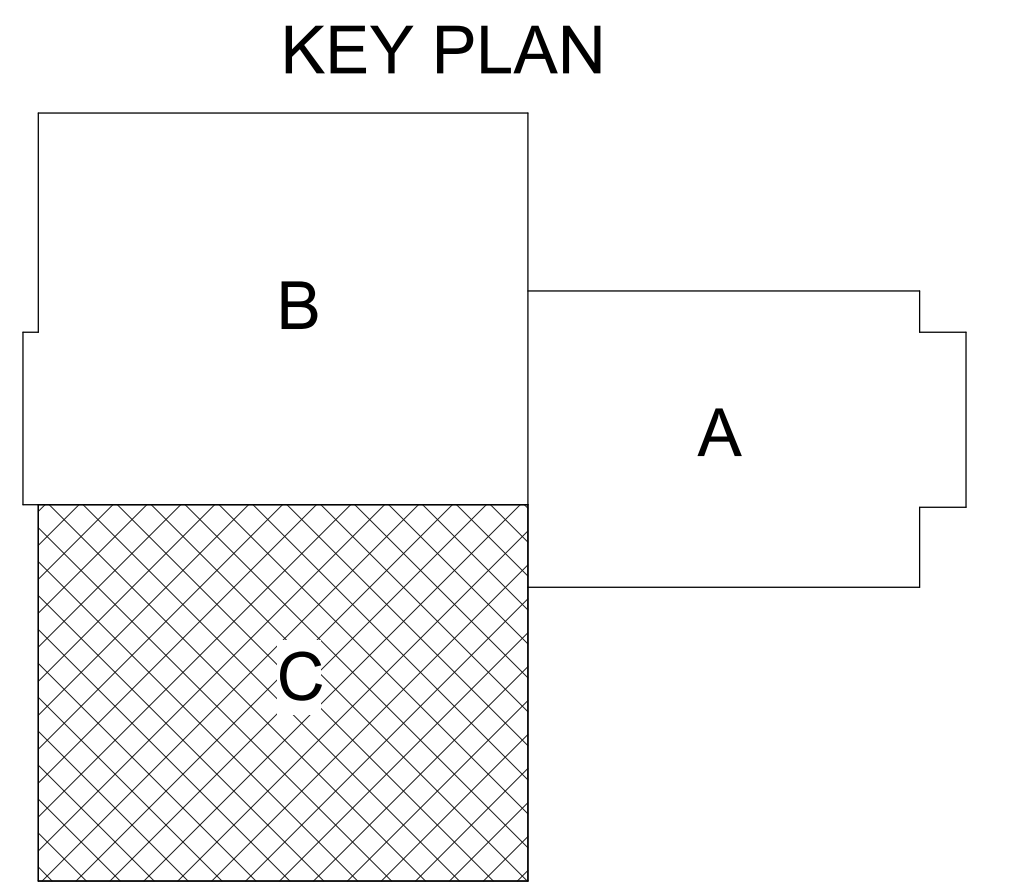
WINTER PARK PUBLIC TRANSIT OPERATIONS FACILITY
 ISSUED FOR:
 100% CONSTRUCTION DOCUMENTS

SHEET TITLE:
 TECHNOLOGY LEVEL 1 FLOOR PLAN - SECTOR C
 SCALE: 1/8" = 1'-0"
 SHEET NUMBER

TS-104



TECHNOLOGY LEVEL 1 FLOOR PLAN - SECTOR C
 SCALE: 1/8" = 1'-0"



B@ BUILDINGWORKS
 systems fulfilled
 303.278.3820 www.bgbuildingworks.com
 Project No. 102995.00 Copyright 2021
 ALBUQUERQUE | AVON | DENVER | FORT COLLINS

NOTES:

1. PROVIDE CONDUIT SLEEVES THROUGH WALLS TO FACILITATE CABLING. PROVIDE FIRESTOPPING AS REQUIRED.
2. ALL LOW VOLTAGE CONDUIT STUBBED OUT ABOVE FINISHED CEILINGS SHALL HAVE LONG RADIUS SWEEPS.
3. CABLE TIES SHALL BE RELEASABLE AND COMPOSED OF HOOK AND LOOP, RUBBER OR SOFT POLYMER. ZIP-TIES OR EQUAL SHALL NOT BE USED.
4. CABLING SHALL BE ROUTED VIA CONDUIT FROM OUTLET BOX TO ABOVE ACCESSIBLE CEILINGS.
5. HOMERUN CABLING TO SERVING DISTRIBUTION FRAME. USE J-HOOKS FOR PATHWAYS ABOVE ACCESSIBLE CEILING.
6. CABLING SHALL NOT RUN UNSUPPORTED FOR LENGTHS GREATER THAN 5'-0". ALL VOICE/DATA CABLING SHALL BE TERMINATED ON RACK MOUNTED PATCH PANELS.
7. PROVIDE EXPANSION CAPABILITY IN CONDUIT CROSSING BUILDING EXPANSION JOINTS. RE: ARCHITECTURAL DRAWINGS FOR LOCATIONS.
8. ALL INFRASTRUCTURE SUPPORTING VOICE/DATA STRUCTURED CABLING SYSTEMS (RACKING, GROUNDING, PATHWAYS, ETC.) SHALL MEET BICSI STANDARDS.
9. CONTRACTOR TO PROVIDE BLOCKING AT PROJECTOR AND DISPLAY LOCATIONS TO SUPPORT 100LBS.
10. LIGHT LINEWEIGHT INDICATES OFCI EQUIPMENT.

FLAG NOTES:

1. 4-POST EQUIPMENT RACK FRAME - PROVIDE CHATSWORTH OR EQUAL.
2. 2-POST EQUIPMENT RACK FRAME - 45U. PROVIDE CHATSWORTH OR EQUAL.
3. PBB - PRIMARY BONDING BUSBAR. PROVIDE CHATSWORTH, HARGER, OR EQUAL.
4. VERTICAL CABLE MANAGER - 6" W, DOUBLE SIDED. PROVIDE CHATSWORTH VELOCITY OR EQUAL.
5. CABLE RUNWAY - 12" W. PROVIDE CHATSWORTH OR EQUAL.
6. HORIZONTAL / BACKBONE PATHWAYS: REFER TO FLOOR PLANS FOR ROUTING.
7. 3/4" PLYWOOD BACKBOARD - AC GRADE. PAINT WITH WHITE FIRE RETARDANT PAINT.
8. SPACE RESERVED FOR FUTURE 2-POST EQUIPMENT RACK FRAME.
9. 19U WALL MOUNT EQUIPMENT CABINET. PROVIDE CHATSWORTH OR EQUAL.
10. 48-PORT PATCH PANEL.
11. 2U CABLE MANAGER.
12. 2U FIBER SHELF.
13. PROVIDE RACK-MOUNTED 8BB BUSBAR IN IDF CABINET.
14. INCOMING SERVICE CONDUIT - (3) 4" C.
15. OFE - RACK MOUNTED UPS.



3003 Larimer Street
Denver, Colorado 80205
phone 303.861.5704
www.ozarch.com



THIS IS IDENTICAL TO THE OFFICIAL DIGITALLY SEALED DOCUMENTS PRODUCED ON THE SAME DATE. THIS VERSION IS BEING SUBMITTED AT THE REQUEST OF THE A/E. THE OFFICIAL DIGITALLY SEALED VERSION IS AVAILABLE FROM THE ENGINEER UPON REQUEST.

WINTER PARK PUBLIC TRANSIT OPERATIONS FACILITY
275 GCR 5103, FRASER, CO 80442

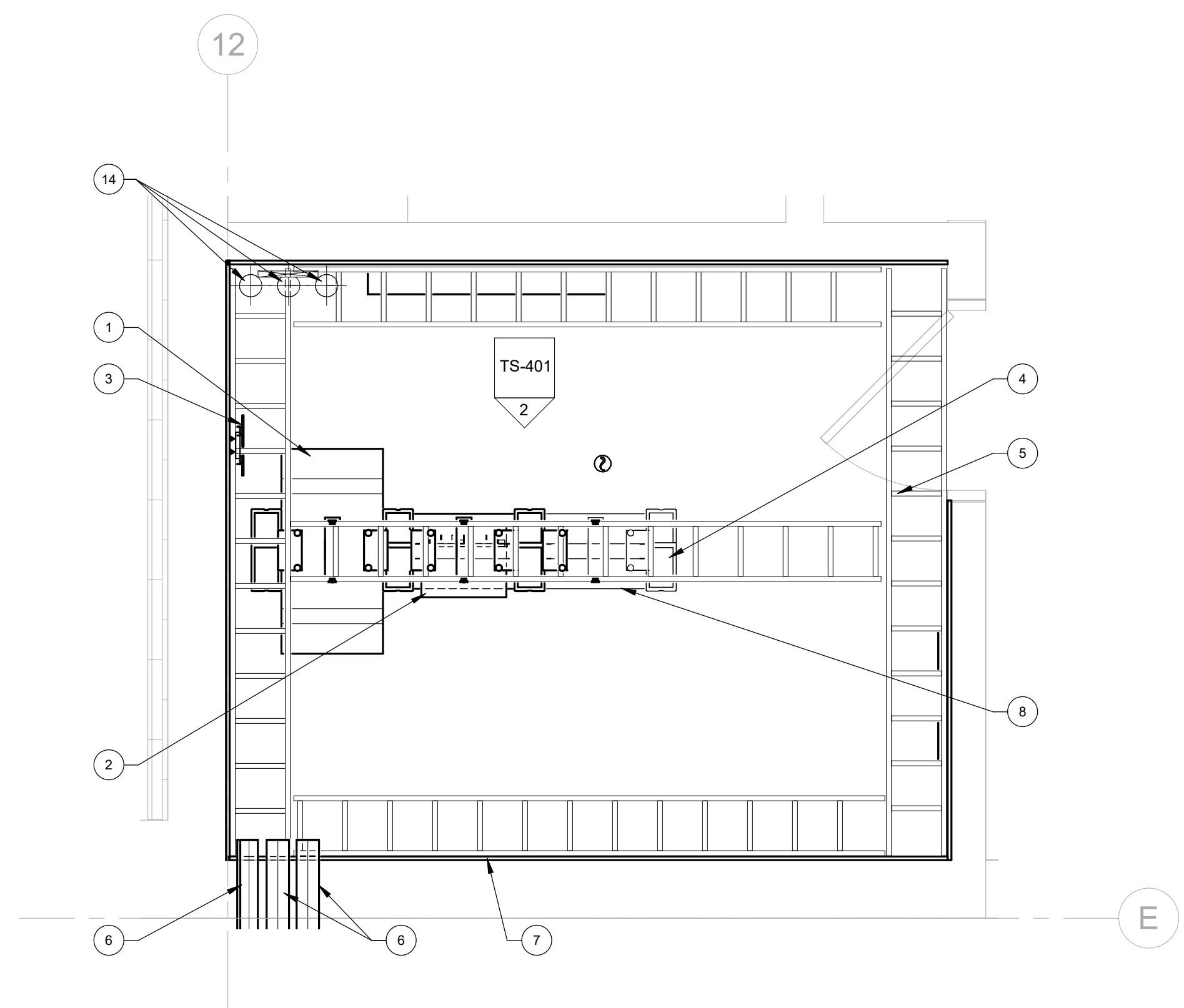
PROJ. NO. 120116
DRAWN: JEB
CHECKED: ELR
APPROVED: ELR
DATE: 02/18/2022

© OZ ARCHITECTURE

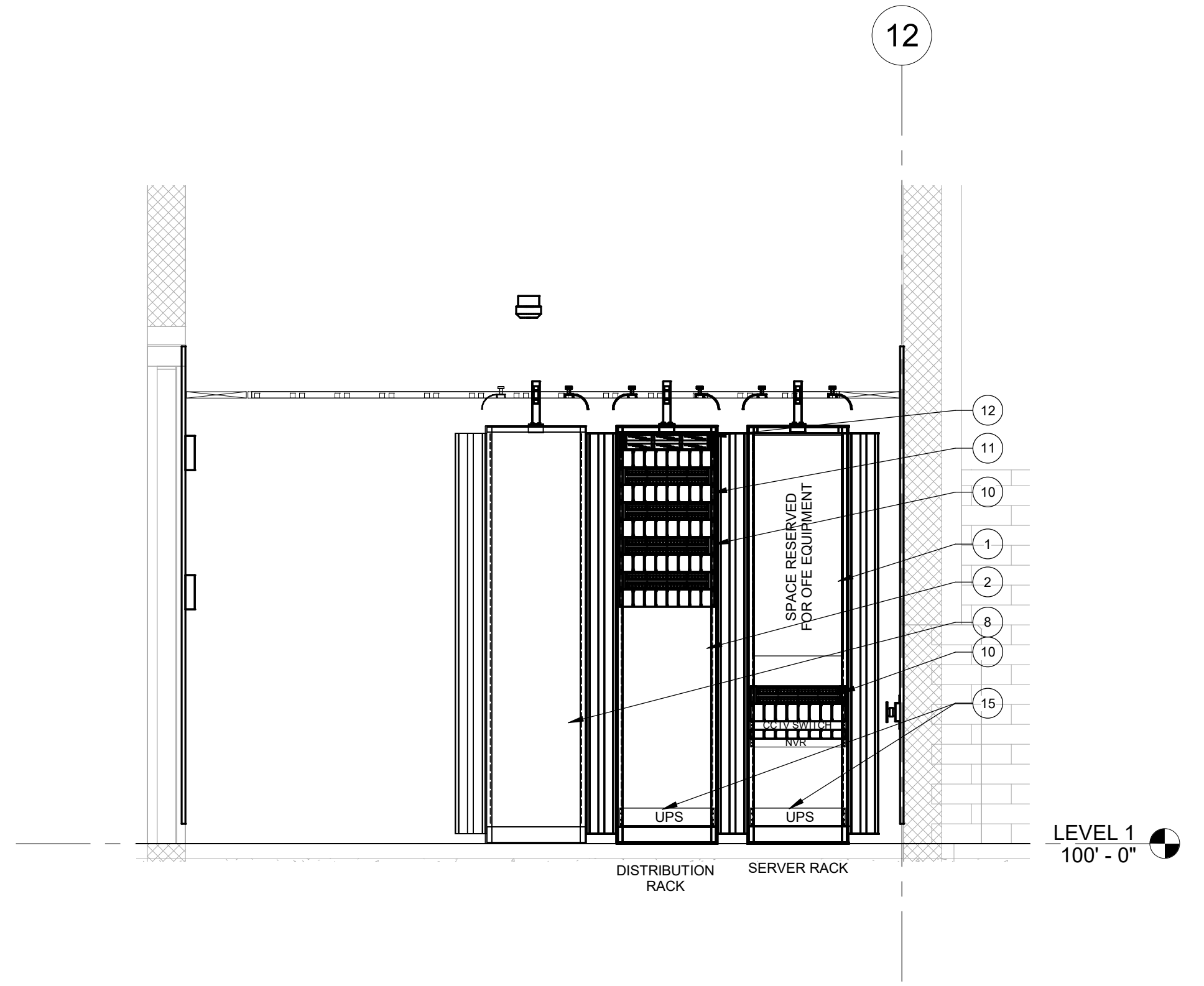
WINTER PARK PUBLIC TRANSIT OPERATIONS FACILITY
ISSUED FOR:
100% CONSTRUCTION DOCUMENTS

SHEET TITLE:
TECHNOLOGY SYSTEMS ENLARGED PLANS
SCALE: 1/2" = 1'-0"
SHEET NUMBER

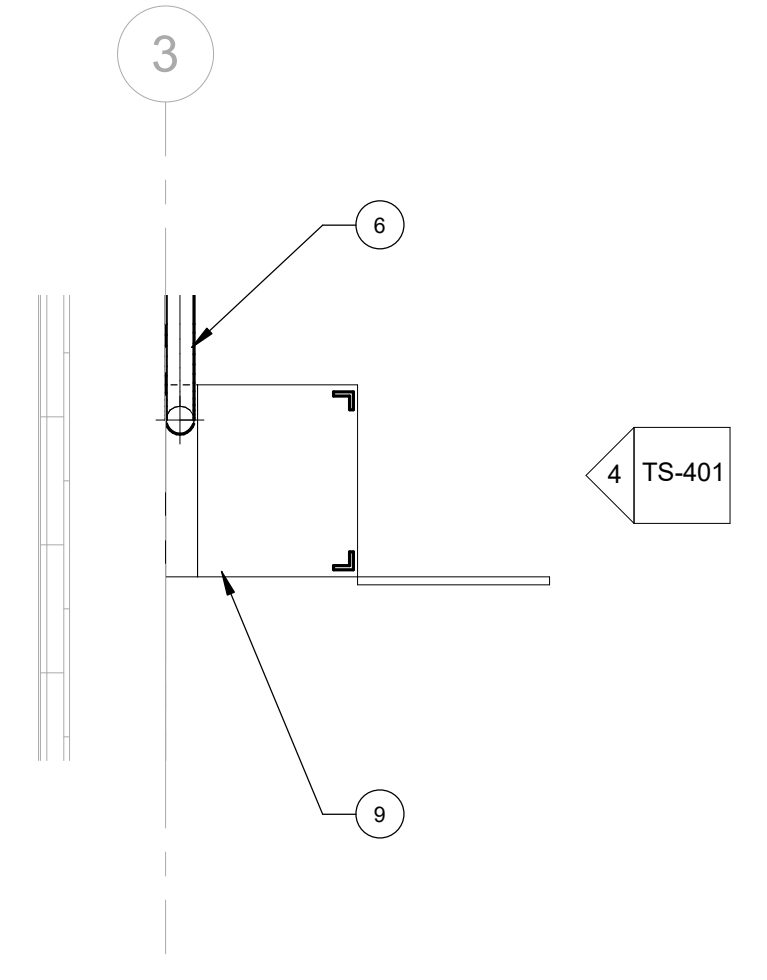
TS-401



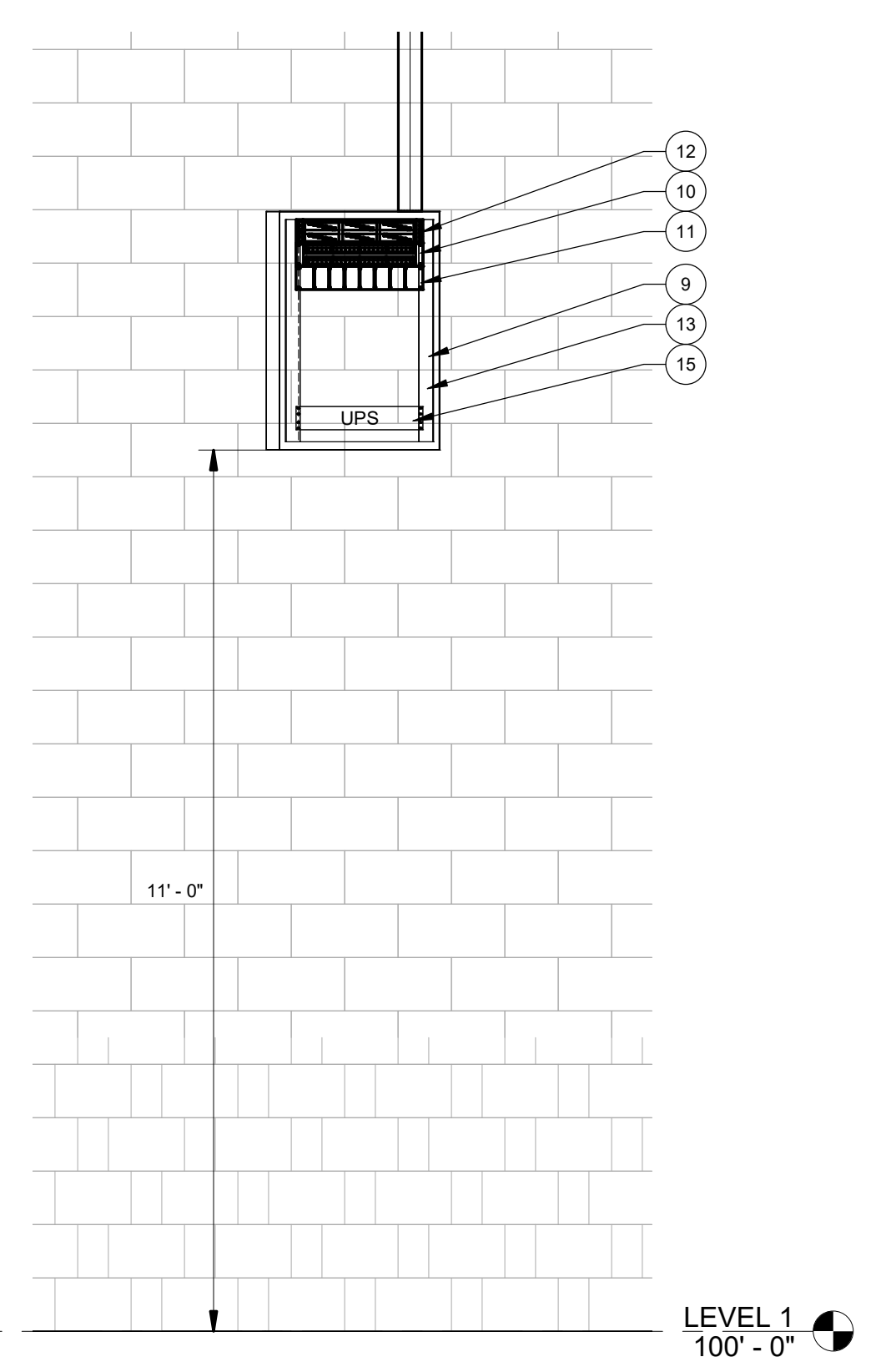
1 ENLARGED TECHNOLOGY PLAN - IT/TEL [117]
SCALE: 1/2" = 1'-0"



2 RACK ELEVATION - IT/TEL [117]
SCALE: 1/2" = 1'-0"



3 ENLARGED TECHNOLOGY PLAN - IDF CABINET
SCALE: 1/2" = 1'-0"



4 IDF CABINET ELEVATION
SCALE: 1/2" = 1'-0"