

TOWN OF WINTER PARK

FRASER RIVER TRAIL IMPROVEMENTS

WINTER PARK, COLORADO

CONSTRUCTION DOCUMENTS



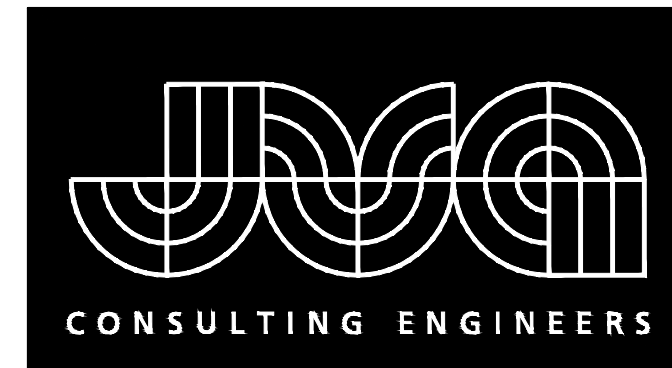
CONTACTS

OWNER: TOWN OF WINTER PARK
50 VASQUEZ ROAD
PO BOX 3327
WINTER PARK, CO 80482

JAMIE WOLTER
(970) 729-8081
JWOLTER@WPGOV.COM

CIVIL ENGINEER: JVA, INC
47 COOPER CREEK WAY, SUITE 328
WINTER PARK, CO 80482

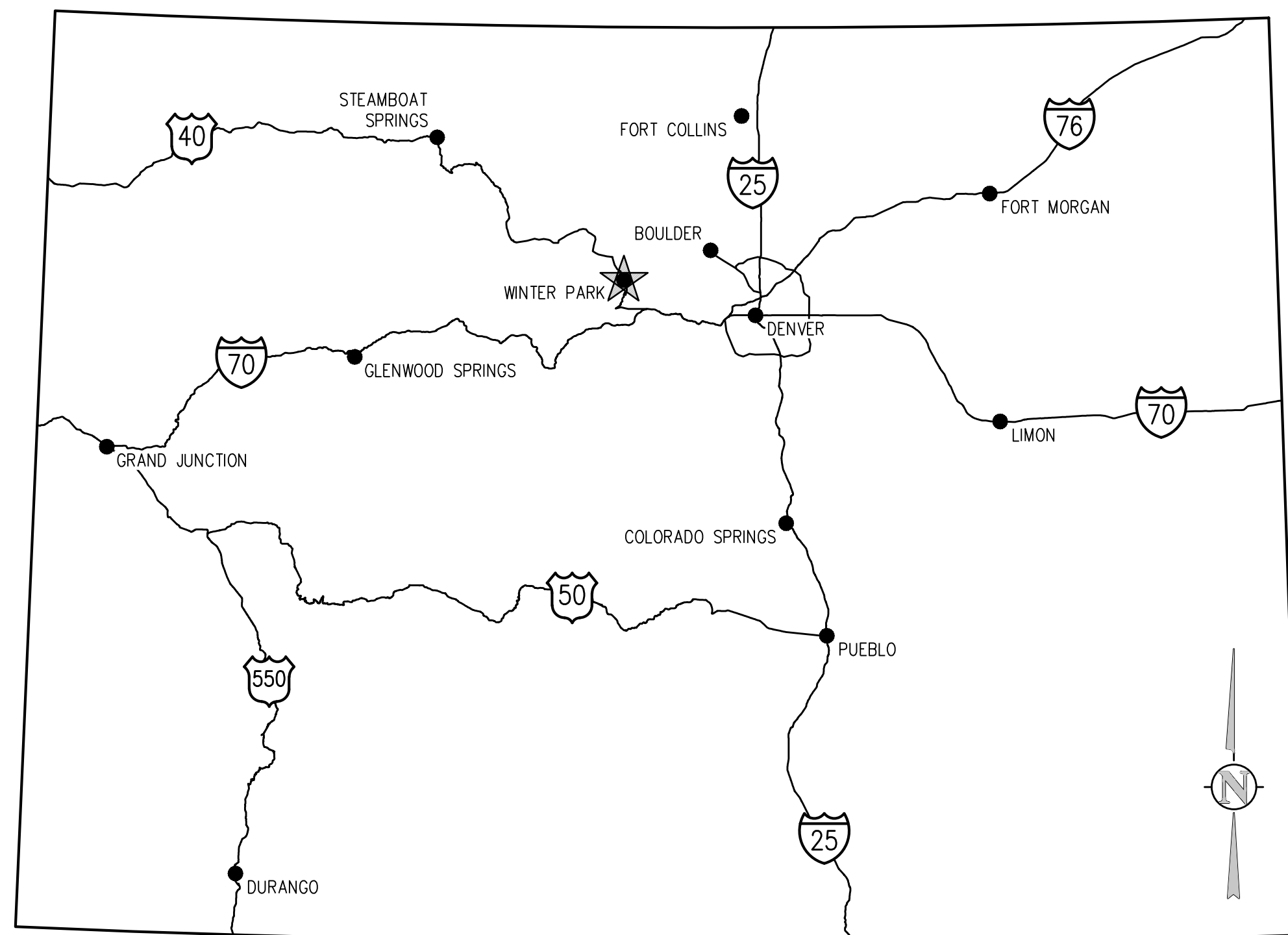
KEVIN VECCHIARELLI
(303) 565-4967
KVECCHIARELLI@JVAJVA.COM



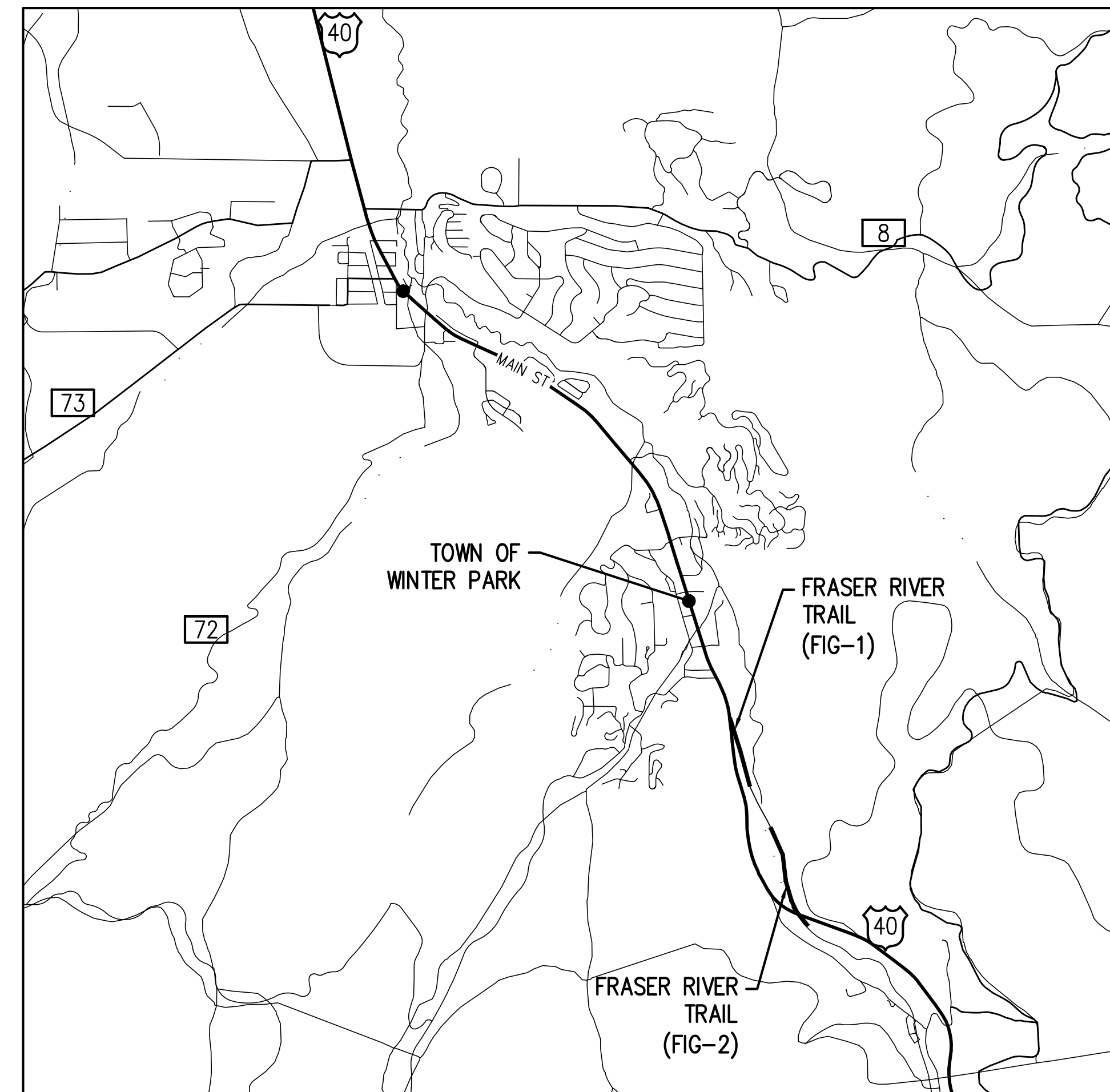
JVA, Inc. PO Box 1860
47 Cooper Creek Way Suite 328
Winter Park, CO 80482 970.722.7677
www.jvajva.com
Boulder • Fort Collins • Winter Park
Glenwood Springs • Denver

DRAWING INDEX

SHEET NO.	TITLE
CO.0	COVER SHEET
CO.1	GENERAL LEGEND NOTES AND ABBREVIATIONS
FIG-1A	FRASER RIVER TRAIL SOUTH
FIG-1B	FRASER RIVER TRAIL SOUTH
FIG-2	FRASER RIVER TRAIL NORTH
CD1.0	SITE DETAILS



VICINITY MAP
NTS



LOCATION MAP
SCALE 1" = 3000'

REVISION DESCRIPTION
NO. DATE DESD DWN

PRELIMINARY
FOR REVIEW ONLY

DESIGNED BY: JPC
DRAWN BY: JPC
CHECKED BY: CWK
JOB #: 1566.105c
DATE: DECEMBER 6, 2024
© JVA, INC.

TOWN OF WINTER PARK
FRASER RIVER TRAIL IMPROVEMENTS
COVER SHEET

SHEET NO.
CO.0

ABBREVIATIONS

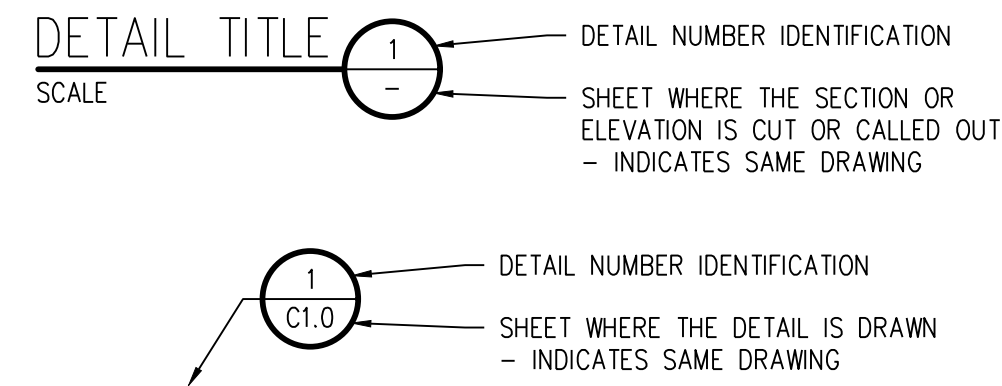
AASHTO	AMERICAN ASSOC. OF STATE HIGHWAY AND TRANSPORTATION OFFICIALS	INCL	INCLUDED
ABAN	ABANDON	ID	INSIDE DIAMETER
AC	ASPHALTIC CONCRETE PAVING	IN	INLET
ADDL	ADDITIONAL	INSUL	INSULATION
ADDM	ADDENDUM	INV	INVERT
ADJ	ADJUSTABLE	IRR	IRRIGATION
AL	ALUMINUM	JTS	JOINTS
ALT	ALTERNATE	KO	KNOCKOUT
AMT	AMOUNT	KPL	KICK PLATE
APPROX	APPROXIMATE	KWY	KEYWAY
ARCH	ARCHITECT(URAL)	L	LEFT OR LITER
ARY	AIR RELIEF VALVE	LSCAPE	LANDSCAPE(ING)
ASTM	AMERICAN SOCIETY FOR TESTING AND MATERIALS	LF	LINEAR FOOT
ASPH	ASPHALT	LP	LOW POINT
ASSY	ASSEMBLY	LT	LIGHT
ASYM	ASYMMETRICAL	LWL	LOW WATER LEVEL
AUTO	AUTOMATIC	MAINT	MAINTENANCE
AVG	AVERAGE	MAN	MANUAL
AWWA	AMERICAN WATER WORKS ASSOC.	MATL	MATERIAL
BC	BACK OF CURB	MAX	MAXIMUM
BFV	BUTTERFLY VALVE	ME	MATCH EXISTING
BG	FINISHED GRADE ADJACENT TO BOTTOM OF WALL	MECH	MECHANICAL
BLDG	BUILDING	MFR	MANUFACTURER
BLK	BLOCK	MH	MANHOLE
BM	BENCH MARK	MIN	MINIMUM
BMP	BEST MANAGEMENT PRACTICE	MISC	MISCELLANEOUS
BS	BACKSIGHT	MJ	MECHANICAL JOINT
BOS	BOTTOM OF STEP	N	NORTH
BOT	BOTTOM	NA	NOT APPLICABLE
BSMT	BASEMENT	NC	NOT IN CONTRACT
BVCE	BEGIN VERTICAL CURVE ELEVATION	NPT	NATIONAL PIPE THREAD
BVCS	BEGIN VERTICAL CURVE STATION	NTS	NOT TO SCALE
BW	BOTTOM OF WALL	OC	ON CENTER
CB	CATCH BASIN	OD	OUTSIDE DIAMETER
CCW	COUNTER CLOCKWISE	OPP	OPPOSITE
CDOT	COLORADO DEPARTMENT OF TRANSPORTATION	OPT	OPTIONAL
CIP	CAST IRON PIPE	PC	POINT OF CURVATURE
CJ	CONSTRUCTION JOINT	PCO	PRESSURE CLEAN OUT
CL	CENTER LINE OR CHAIN LINK	PCR	POINT OF CURVE RETURN
CLR	CLEAR	PI	POINT OF INTERSECTION
CMP	CORRUGATED METAL PIPE	PVI	POINT OF VERTICAL INTERSECTION
CMU	CONCRETE MASONRY UNIT	PL	PROPERTY LINE
CO	CLEANOUT	PE	POLYETHYLENE
CONC	CONCRETE	PREFAB	PREFABRICATED
CONST	CONSTRUCTION	PRELIM	PRELIMINARY
CONT	CONTINUOUS(ACTION)	PREP	PREPARATION
COR	CORNER	PROP	PROPOSED
CR	CONCENTRIC REDUCER	PRV	PRESSURE REDUCING VALVE OR PRESSURE RELIEF VALVE
CTR	CENTER	PSF	POUNDS PER SQUARE FOOT
CY	CUBIC YARDS	PSI	POUNDS PER SQUARE INCH
DEMO	DEMOLITION	PT	POINT OF TANGENCY
DIA	DIAMETER	PV	PLUG VALVE
DIAG	DIAGONAL	PVC	POLYVINYL CHLORIDE OR POINT OF VERTICAL CURVATURE
DIP	DUCTILE IRON PIPE	PVMT	PAVEMENT
DOM	DOMESTIC	QTY	QUANTITY
DN	DOWN	R	RIGHT
DR	DRAIN	RAD	RADIUS
DWG	DRAWING	RCP	REINFORCED CONCRETE PIPE
DWL	DOWEL	RD	ROOF DRAIN
E	EAST	RE	REFERENCE
EA	EACH	RECT	RECTANGULAR
ECC	ECCENTRIC	REINF	REINFORCE (D) (NG) (MENT)
EJ	EXPANSION JT	REQD	REQUIRED
EL	ELEVATION	ROW	RIGHT OF WAY
ELB	ELBOW	SAN	SANITARY
ELEC	ELECTRICAL	SD	STORM DRAIN
ENGR	ENGINEER	SECT	SECTION
EOP	EDGE OF PAVEMENT	SPD	STANDARD PROCTOR DENSITY
EQ	EQUAL	SPEC	SPECIFICATION
EQUIP	EQUIPMENT	SQ	SQUARE
EQUIV	EQUIVALENT	SQ IN	SQUARE INCH
ESMT	EASEMENT	SQ FT	SQUARE FOOT
EST	ESTIMATE	SQ YD	SQUARE YARD
EVCE	END VERTICAL CURVE ELEVATION	SS	SANITARY SEWER
EVCS	END VERTICAL CURVE STATION	SST	STAINLESS STEEL
EW	EACH WAY	STA	STATION
EXP JT	EXPANSION JOINT	STD	STANDARD
EXIST	EXISTING	STL	STEEL
FND	FOUNDATION	STRUCT	STRUCTURAL
FES	FLARED END SECTION	SVC	SERVICE
FF	FINISH FLOOR	SWMP	STORMWATER MANAGEMENT PLAN
FG	FINISH GRADE	SYM	SYMMETRICAL
FH	FIRE HYDRANT	TB	THRUST BLOCK
FL	FLOW LINE	TBC	TOP BACK OF CURB
FN	FENCE	TBM	TEMPORARY BENCH MARK
FOC	FACE OF CONCRETE	TEMP	TEMPORARY
FBM	FEET PER MINUTE	TG	FINISHED GRADE ADJACENT TO TOP OF WALL
FPS	FEET PER SECOND	THK	THICK
FT	FEET	TOB	TOP OF BANK
FTG	FOOTING OR FITTING	TOC	TOP OF CONCRETE OR TOP OF CURB
G	GAS	TOD	TOP OF DRAIN
GA	GAUGE	TOS	TOP OF STEP
GAL	GALLON	TOT	TOTAL
GALV	GALVANIZED	TW	TOP OF WALL OR CAP OF WALL
GCO	GRADE CLEANOUT	TYP	TYPICAL
GIP	GALVANIZED IRON PIPE	UBC	UNIFORM BUILDING CODE
GND	GROUND	UGE	UNDERGROUND ELECTRIC
OPD	GALLONS PER DAY	UTIL	UTILITY
GPM	GALLONS PER MINUTE	VERT	VERTICAL
GR	GRATE	VC	POINT OF VERTICAL CURVATURE
GRG	GRATING	VCP	VITRIFIED CLAY PIPE
GSP	GALVANIZED STEEL PIPE	W	WIDE OR WIDTH
GV	GATE VALVE	W/	WITH
H	HIGH	W/O	WITHOUT
HB	HOSE BIB	WOCE	WATER QUALITY CONTROL ELEVATION
HE	HORIZONTAL ELLIPTICAL	WSE	WATER SURFACE ELEVATION
HDWL	HEADWALL	WW	WASTEWATER
HDRL	HAND RAIL	X SECT	CROSS SECTION
HDRZ	HORIZONTAL	XFMR	ELECTRONIC TRANSFORMER
HORIZ	HORIZONTAL	YH	YARD HYDRANT
HP	HIGH POINT		
HR	HOUR		
HVAC	HEATING, VENTILATION, AIR CONDITIONING		
HWY	HIGHWAY		
HWL	HIGH WATER LINE		
HYD	HYDRANT		

DESIGN LEGEND

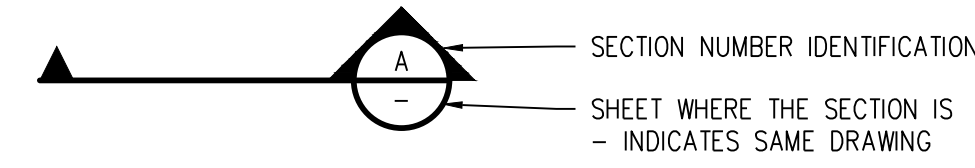
	BENCHMARK		FENCE
	MANHOLE		FLOW LINE OF DITCH OR WASH
	AREA DRAIN		SLOPE ARROW
	COMBINATION INLET		PROPOSED SPOT ELEVATION
	TYPE R INLET		EXIST SPOT ELEVATION
	TYPE 13 FIELD INLET		EXIST INDEX CONTOUR
	FLARED END SECTION W/ RIPRAP		EXIST INTERMEDIATE CONTOUR
	TEE W/ THRUST BLOCK		PROPOSED INDEX CONTOUR
	BEND W/ THRUST BLOCK		PROPOSED INTERMEDIATE CONTOUR
	END CAP W/ THRUST BLOCK		CURB AND GUTTER
	GATE VALVE		WATER METER
	REDUCER/INCRASER		FIRE HYDRANT
	WATER METER		STORM - 12" AND SMALLER
	STORM - LARGER THAN 12"		STORM - LARGER THAN 12"
	ROOF DRAIN		TRENCH DRAIN
	UNDERDRAIN		SANITARY SEWER
	FORCE MAIN		WATER
	NON POTABLE WATER		POTABLE WATER
	IRRIGATION - LARGER THAN 12"		CABLE TV
	DRAIN		ELECTRIC
	UNDERGROUND ELECTRIC		OVERHEAD ELECTRIC
	TELEPHONE		FIBER OPTIC
	FUEL		GAS
	PVC PIPE (MISC)		MATCHLINE



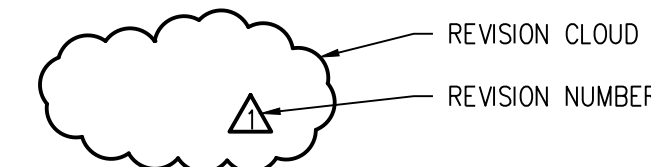
DETAIL TITLE



SECTION CALLOUT



DETAIL MARKER



GENERAL NOTES

- ALL MATERIALS AND WORKMANSHIP SHALL BE IN CONFORMANCE WITH THE LATEST STANDARDS AND SPECIFICATIONS OF THE TOWN OF WINTER PARK, AND APPLICABLE STATE AND LOCAL STANDARDS AND SPECIFICATIONS. THE CONTRACTOR SHALL HAVE IN POSSESSION AT THE JOB SITE AT ALL TIMES ONE (1) SIGNED COPY OF APPROVED PLANS, STANDARDS AND SPECIFICATIONS. CONTRACTOR SHALL CONSTRUCT AND MAINTAIN EMERGENCY ACCESS ROUTES TO THE SITE AND STRUCTURE AT ALL TIMES PER THE APPLICABLE EAST GRAND FIRE PROTECTION DISTRICT NO. 1 REQUIREMENTS. THE CONTRACTOR SHALL OBTAIN WRITTEN APPROVAL FOR ANY VARIANCE TO THE ABOVE DOCUMENTS. NOTIFY ENGINEER OF ANY CONFLICTING STANDARDS OR SPECIFICATIONS. IN THE EVENT OF ANY CONFLICTING STANDARD OR SPECIFICATION, THE MORE STRINGENT OR HIGHER QUALITY STANDARD, DETAIL OR SPECIFICATION SHALL APPLY.
- THE CONTRACTOR SHALL OBTAIN, AT HIS OWN EXPENSE, ALL APPLICABLE CODES, LICENSES, STANDARD SPECIFICATIONS, PERMITS, BONDS, ETC., WHICH ARE NECESSARY TO PERFORM THE PROPOSED WORK, INCLUDING, BUT NOT LIMITED TO A LOCAL AND STATE GROUNDWATER DISCHARGE AND COLORADO DEPARTMENT OF PUBLIC HEALTH AND ENVIRONMENT (CDPHE) STORMWATER DISCHARGE PERMIT ASSOCIATED WITH CONSTRUCTION ACTIVITY.
- THE CONTRACTOR SHALL BE RESPONSIBLE FOR NOTIFYING THE REQUIRED PARTY (OWNER, OWNER'S REPRESENTATIVE, MUNICIPAL/DISTRICT INSPECTOR, GEOTECHNICAL ENGINEER, ENGINEER AND/OR UTILITY OWNER) AT LEAST 48 HOURS PRIOR TO START OF ANY CONSTRUCTION, PRIOR TO BACKFILLING, AND AS REQUIRED BY JURISDICTIONAL AUTHORITY AND/OR PROJECT SPECIFICATIONS. THE CONTRACTOR SHALL CONTINUE WITH NOTIFICATIONS THROUGHOUT THE PROJECT AS REQUIRED BY THE STANDARDS AND SPECIFICATIONS.
- THE LOCATIONS OF EXISTING UTILITIES ARE SHOWN IN THE APPROXIMATE LOCATION BASED ON INFORMATION BY OTHERS. NOT ALL UTILITIES MAY BE SHOWN. THE CONTRACTOR SHALL DETERMINE THE EXACT SIZE, LOCATION AND TYPE OF ALL EXISTING UTILITIES WHETHER SHOWN OR NOT BEFORE COMMENCING WORK. THE ENGINEER AND/OR OWNER ASSUMES NO RESPONSIBILITY FOR THE ACCURACY OR COMPLETENESS SHOWN ON PLANS. THE CONTRACTOR SHALL BE FULLY AND SOLELY RESPONSIBLE FOR ANY AND ALL DAMAGES AND COSTS WHICH MIGHT OCCUR BY THE CONTRACTOR'S FAILURE TO EXACTLY LOCATE AND PRESERVE ANY AND ALL UTILITIES. THE CONTRACTOR SHALL NOTIFY ALL PUBLIC AND PRIVATE UTILITY COMPANIES AND DETERMINE THE LOCATION OF ALL EXISTING UTILITIES PRIOR TO PROCEEDING WITH GRADING AND CONSTRUCTION. ALL WORK PERFORMED IN THE AREA OF UTILITIES SHALL BE PERFORMED AND INSPECTED ACCORDING TO THE REQUIREMENTS OF THE UTILITY OWNER. LIKEWISE, THE CONTRACTOR SHALL BE RESPONSIBLE FOR LOCATING AND MAPPING ANY EXISTING UTILITY (INCLUDING DEPTH) WHICH MAY CONFLICT WITH THE PROPOSED CONSTRUCTION, AND FOR RELOCATING ENCOUNTERED UTILITIES AS DIRECTED BY THE ENGINEER. CONTRACTOR SHALL CONTACT AND RECEIVE APPROVAL FROM MUNICIPALITY/UTILITY OWNER AND ENGINEER BEFORE RELOCATING ANY ENCOUNTERED UTILITIES. CONTRACTOR RESPONSIBLE FOR SERVICE CONNECTIONS, AND RELOCATING AND RECONNECTING AFFECTED UTILITIES AS COORDINATED WITH UTILITY OWNER AND/OR ENGINEER, INCLUDING NON-MUNICIPAL UTILITIES (TELEPHONE, GAS, CABLE, ETC., WHICH SHALL BE COORDINATED WITH THE UTILITY OWNER). THE CONTRACTOR SHALL IMMEDIATELY CONTACT ENGINEER UPON DISCOVERY OF A UTILITY DISCREPANCY OR CONFLICT. AT LEAST 48 HOURS PRIOR TO CONSTRUCTION, THE CONTRACTOR SHALL NOTIFY THE UTILITY NOTIFICATION CENTER OF COLORADO (1-800-922-1987, WWW.UNCC.ORG) SEE SURVEY UTILITY LOCATION INFORMATION BELOW.
- THE CONTRACTOR SHALL BE SOLELY AND COMPLETELY RESPONSIBLE FOR CONDITIONS AT AND ADJACENT TO THE JOB SITE, INCLUDING SAFETY OF ALL PERSONS AND PROPERTY DURING THE PERFORMANCE OF THE WORK. THE CONTRACTOR SHALL PREPARE A TRAFFIC CONTROL PLAN FOR OWNER AND/OR CITY APPROVAL AND PROVIDE ALL LIGHTS, SIGNS, BARRICADES, FENCING, FLAGMEN OR OTHER DEVICES NECESSARY TO PROVIDE FOR PUBLIC SAFETY. THIS REQUIREMENT SHALL APPLY CONTINUOUSLY AND NOT BE LIMITED TO NORMAL WORKING HOURS. THE CONTRACTOR AGREES TO COMPLY WITH THE PROVISIONS OF THE TRAFFIC CONTROL PLAN AND THE LATEST EDITION OF THE "MANUAL ON UNIFORM TRAFFIC CONTROL DEVICES," PART VI, FOR CONSTRUCTION SIGNAGE AND TRAFFIC CONTROL. ALL TEMPORARY AND PERMANENT TRAFFIC SIGNS SHALL COMPLY TO THE MANUAL ON UNIFORM TRAFFIC CONTROL DEVICES (MUTCD) WITH REGARD TO SIGN SHAPE, COLOR, SIZE, LETTERING, ETC. UNLESS OTHERWISE SPECIFIED. IF APPLICABLE, PART NUMBERS ON SIGNAGE DETAILS REFER TO MUTCD SIGN NUMBERS.
- THE CONTRACTOR SHALL BE RESPONSIBLE FOR REMOVING ANY GROUNDWATER ENCOUNTERED DURING THE CONSTRUCTION OF ANY PORTION OF THIS PROJECT. GROUNDWATER SHALL BE PUMPED, PIPED, REMOVED AND DISPOSED OF IN A MANNER WHICH DOES NOT CAUSE FLOODING OF EXISTING STREETS NOR EROSION ON ADJUTING PROPERTIES IN ORDER TO CONSTRUCT THE IMPROVEMENTS SHOWN ON THESE PLANS. GROUNDWATER TO BE PUMPED SHALL BE TESTED, PERMITTED, AND PUMPED PER THE STATE OF COLORADO AND LOCAL GROUNDWATER DISCHARGING PERMIT REQUIREMENTS.
- RIM AND GRATE ELEVATIONS SHOWN ON PLANS ARE APPROXIMATE ONLY AND ARE NOT TO BE TAKEN AS FINAL ELEVATIONS. THE CONTRACTOR SHALL ADJUST RIMS AND OTHER IMPROVEMENTS TO MATCH FINAL PAVEMENT AND FINISHED GRADE ELEVATIONS.
- THE EXISTING AND PROPOSED ELEVATIONS OF FLATWORK, SIDEWALKS, CURBS, THRESHOLDS, PAVING, ETC. AS SHOWN HEREON ARE BASED ON EXTRAPOLATION OF FIELD SURVEY DATA, EXISTING CONDITIONS, AND DATA PROVIDED BY OTHERS. AT CRITICAL AREAS AND SITE FEATURES, CONTRACTOR SHALL HAVE FORMWORK INSPECTED AND APPROVED BY OWNER, OWNER'S REPRESENTATIVE, OR ENGINEER PRIOR TO PLACING CONCRETE. MINOR ADJUSTMENTS, AS APPROVED, TO PROPOSED GRADES, INVERTS, ETC. MAY BE REQUIRED TO PREVENT PONDING OR SLOPE NOT IN CONFORMANCE WITH MUNICIPAL STANDARDS. ALL FLATWORK MUST PREVENT PONDING AND PROVIDE POSITIVE DRAINAGE AWAY FROM EXISTING AND PROPOSED BUILDINGS, WALLS, ROOF DRAIN OUTFALLS, ACROSS DRIVES AND WALKS, ETC., TOWARDS THE PROPOSED INTENDED DRAINAGE FEATURES AND CONVEYANCES.
- FINAL LIMITS OF REQUIRED ASPHALT SAWCUTTING AND PATCHING MAY VARY FROM LIMITS SHOWN ON PLANS. CONTRACTOR TO PROVIDE SAWCUT AND PATCH WORK TO ACHIEVE POSITIVE DRAINAGE AND A SMOOTH TRANSITION TO EXISTING ASPHALT WITHIN SLOPES ACCEPTABLE TO THE ENGINEER AND WITHIN MUNICIPAL STANDARDS. CONTRACTOR SHALL PROVIDE ADDITIONAL SAWCUTTING AND PATCHING AT UTILITY WORK, CONNECTION POINTS TO EXISTING PAVEMENT AND FEATURES, ETC. THAT MAY NOT BE DELINEATED ON PLANS.
- ANY EXISTING MONITORING WELLS, CLEANOUTS, VALVE BOXES, ETC. TO BE PROTECTED AND TO REMAIN IN SERVICE. IF FEATURES EXIST, EXTEND OR LOWER TO FINAL SURFACE WITH LIKE KIND CAP WITH STANDARD CAST ACCESS LID WITH SAME MARKINGS. IN LANDSCAPED AREAS PROVIDE A CONCRETE COLLAR (18"x18"x6" THICK) AT ALL EXISTING AND PROPOSED MONITORING WELLS, CLEANOUTS, VALVE BOXES, ETC.
- ALL SURPLUS MATERIALS, TOOLS, AND TEMPORARY STRUCTURES, FURNISHED BY THE CONTRACTOR, SHALL BE REMOVED FROM THE PROJECT SITE BY THE CONTRACTOR. ALL DEBRIS AND RUBBISH CAUSED BY THE OPERATIONS OF THE CONTRACTOR SHALL BE REMOVED, AND THE AREA OCCUPIED DURING CONSTRUCTION ACTIVITIES SHALL BE RESTORED TO ITS ORIGINAL CONDITION, WITHIN 48 HOURS OF PROJECT COMPLETION, UNLESS OTHERWISE DIRECTED BY THE MUNICIPALITY OR OWNER'S REPRESENTATIVE.
- THE CONTRACTOR IS REQUIRED TO PROVIDE AND MAINTAIN EROSION AND SEDIMENT CONTROL MEASURES IN ACCORDANCE WITH THE LOCAL JURISDICTION, THE STATE OF COLORADO, MILE HIGH FLOOD DISTRICT "URBAN STORM DRAINAGE CRITERIA MANUAL VOLUME 3", THE M-STANDARD PLANS OF THE COLORADO DEPARTMENT OF TRANSPORTATION, AND THE APPROVED EROSION CONTROL PLAN. JURISDICTIONAL AUTHORITY MAY REQUIRE THE CONTRACTOR TO PROVIDE ADDITIONAL EROSION CONTROL MEASURES AT THE CONTRACTOR'S EXPENSE DUE TO UNFORESEEN EROSION PROBLEMS OR IF THE PLANS DO NOT FUNCTION AS INTENDED. THE CONTRACTOR IS RESPONSIBLE FOR PROHIBITING SILT AND DEBRIS LADEN RUNOFF FROM LEAVING THE SITE, AND FOR KEEPING ALL PUBLIC AREAS FREE OF MUD AND DEBRIS. THE CONTRACTOR IS RESPONSIBLE FOR RE-ESTABLISHING FINAL GRADES AND FOR REMOVING ACCUMULATED SEDIMENTATION FROM ALL AREAS INCLUDING SWALES AND DETENTION/WATER QUALITY AREAS. CONTRACTOR SHALL REMOVE TEMPORARY EROSION CONTROL MEASURES AND REPAIR AREAS AS REQUIRED AFTER VEGETATION IS ESTABLISHED AND ACCEPTED BY OWNER AND MUNICIPALITY.



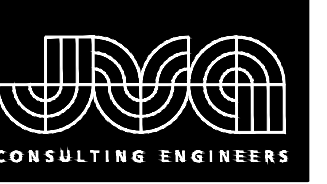
REVISION DESCRIPTION

NO. DATE DESIGNED BY

PRELIMINARY FOR REVIEW ONLY
 DESIGNED BY: JPC
 DRAWN BY: JPC
 CHECKED BY: CWK
 JOB #: 1566.105c
 DATE: DECEMBER 6, 2024
 © JVA, INC.

TOWN OF WINTER PARK
 FRASER RIVER TRAIL IMPROVEMENTS
 GENERAL LEGEND NOTES AND ABBREVIATIONS

SHEET NO.
C0.1



JVA, Inc. PO Box 1860
 47 Cooper Creek Way Suite 118
 Winter Park, CO 80482 970.722.7677
 www.jvaja.com
 Boulder • Fort Collins • Winter Park
 Glenwood Springs • Denver

K:\1566c - WP Town Engineer\Open Jobs\1566.05c - Fraser River Trail Room Improvements\Drawings\1566.05c - Site Plan - Fraser Trail.dwg, 12/03/2024 - 10:54 PM, JPC

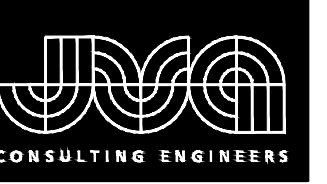


PRELIMINARY FOR REVIEW ONLY	
DESIGNED BY:	JPC
DRAWN BY:	JPC
CHECKED BY:	CWK
JOB #:	1566.119.3c
DATE:	JUNE 20, 2024
© JVA, INC.	

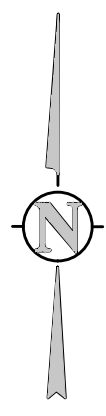
TOWN OF WINTER PARK AND TOWN OF FRASER
 ASPHALT REHABILITATION
 FRASER RIVER TRAIL SOUTH

SHEET NO.
FIG-1A

NO.	DATE	DES'D	OWN	REVISION DESCRIPTION



JVA, Inc. PO Box 1860
 47 Cooper Creek Way Suite 118
 Winter Park, CO 80482 970.722.7677
 www.jvajva.com
 Boulder • Fort Collins • Winter Park
 Glenwood Springs • Denver



PRELIMINARY FOR REVIEW ONLY	
DESIGNED BY:	JPC
DRAWN BY:	JPC
CHECKED BY:	CWK
JOB #:	1566.119.3c
DATE:	JUNE 20, 2024
© JVA, INC.	

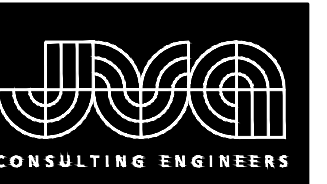
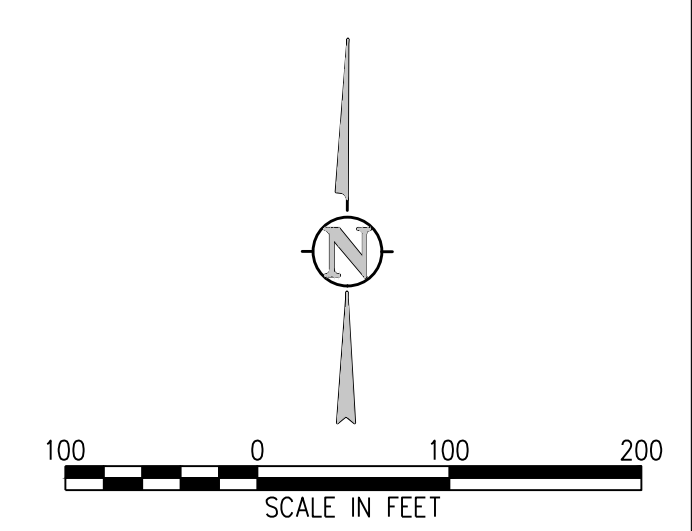
TOWN OF WINTER PARK AND TOWN OF FRASER
 ASPHALT REHABILITATION

FRASER RIVER TRAIL SOUTH

SHEET NO.
FIG-1B

K:\1566c - WP Town Engineer\Open Jobs\1566.105c - Fraser River Trail Room Improvements\Drawings\1566.105c - Site Plan - Fraser Trail.dwg, 12/03/2024 - 10:54 PM, JPC

K:\1566 - WP Town Engineer\Open Jobs\1566.05c - Fraser River Trail Room Improvements\Drawings\1566.05c - Site Plan - Fraser Trail.dwg, 12/03/2024 - 10:54 PM, JPC



JVA, Inc. PO Box 1860
 47 Cooper Creek Way Suite 118
 Winter Park, CO 80482 970.722.7677
 www.jvajva.com
 Boulder • Fort Collins • Winter Park
 Glenwood Springs • Denver

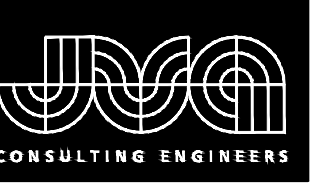
NO.	DATE	DES'D	DWN	REVISION DESCRIPTION

PRELIMINARY FOR REVIEW ONLY

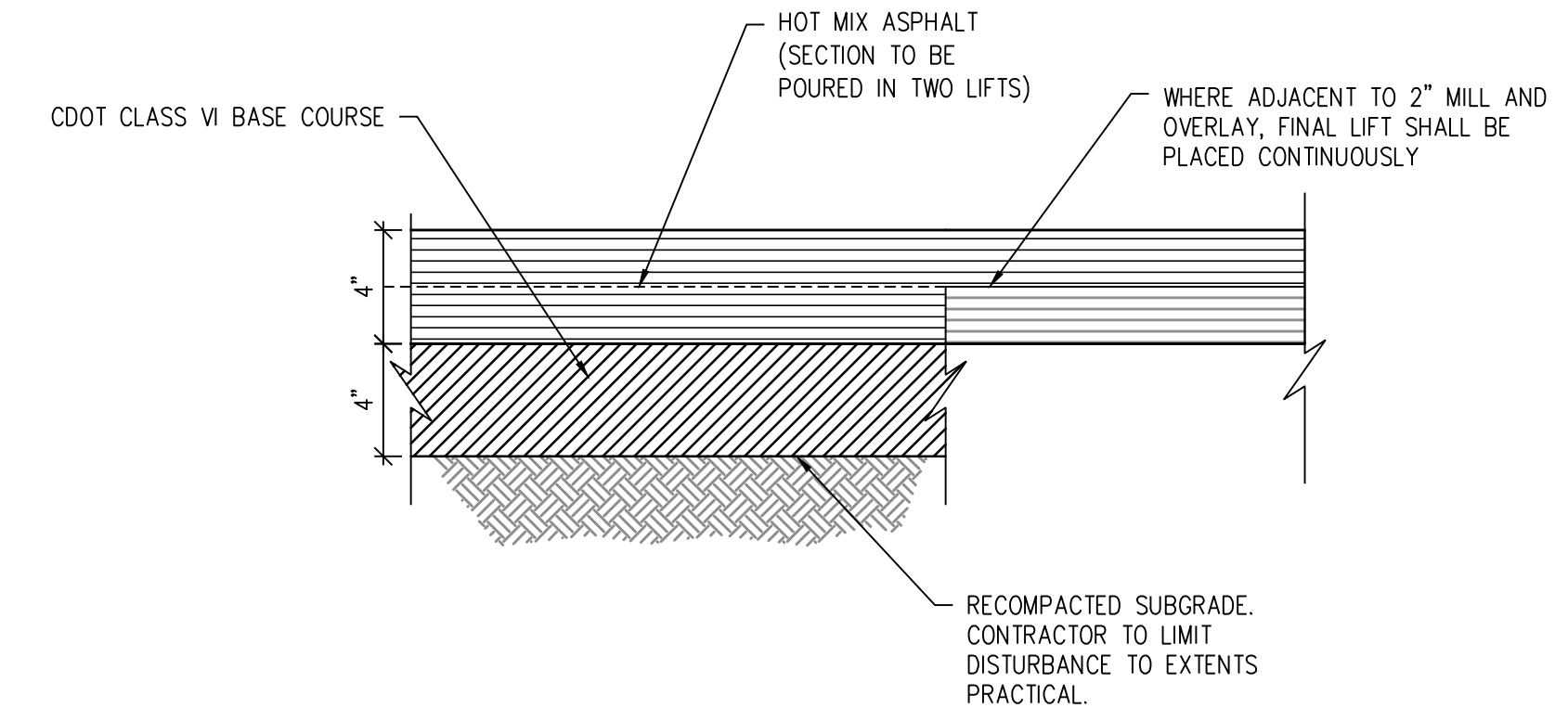
DESIGNED BY: JPC
 DRAWN BY: JPC
 CHECKED BY: CWK
 JOB #: 1566.119.3c
 DATE: JUNE 20, 2024
 © JVA, INC.

TOWN OF WINTER PARK AND TOWN OF FRASER
 ASPHALT REHABILITATION
 FRASER RIVER TRAIL NORTH

SHEET NO.
FIG-2



JVA, Inc. PO Box 1860
 47 Cooper Creek Way Suite 118
 Winter Park, CO 80482 970.722.7677
 www.jvaja.com
 Boulder • Fort Collins • Winter Park
 Glenwood Springs • Denver



FULL DEPTH ASPHALT REPLACEMENT SECTION DETAIL 1
 NTS FIG-1A



REPRESENTATIVE EXAMPLE OF FAILURE REPLACEMENT AREA

NO. DATE DESD DWN REVISION DESCRIPTION

PRELIMINARY
FOR REVIEW ONLY

DESIGNED BY: JPC
 DRAWN BY: JPC
 CHECKED BY: CWK
 JOB #: 1566.105c
 DATE: DECEMBER 6, 2024
 © JVA, INC.

TOWN OF WINTER PARK
FRASER RIVER TRAIL IMPROVEMENTS
SITE DETAILS

SHEET NO.

CD1.0